

13th
EDITION
2017



INNOVATIVE
TECHNOLOGY
and **MOTO PERSONAL**
CHARM

Apparel Manufacturing Co.,

www.atrox.pk


THAT'S WHAT ATROX IS!

ATROX Group is an exquisite combination of the spirit of creativeness and the energy of youth. Its existence and continuation is the outcome of the passion and vision of a team of youngsters, who have inherited the proverbial artisanship of Sialkot. Blending the inherited skill with the state-of-the-art technology, they have grown into an organization manufacturing and exporting Motorbike Racing suits, Garments and Accessories the world over. Within a short span of a few years, it has earned the trust of business partners and customers worldwide.

Now with our buyers and business partners spread across the globe, we are ready to explore new horizons in the art of manufacturing Motorbike Garments and Accessories.

Our R&D department works round the clock to search the new dimensions in this field. This keeps us in touch with ever-changing global professional and technological scene.

Quite naturally, no business organization stands in vacuum. Therefore, our trusted customers & buyers are the other most important other side of the picture. The ever flowing stream of feed back from them keeps us on our toes and brings us closest to the feel of things. Without this support we lose considerably. Hence, we honour the reputation and trust of our customers ahead of everything else.

Under the brand name of  the range of designs, materials and colors is virtually inexhaustible. Apart from the variety in our Catalogue and web, we can accommodate any Customer-advised specifications and modifications.

The professional and aesthetic demands of any kind can be met without any problem. Under the vigilant eyes of our experts, every stitch is scanned to maintain the highest standards of quality and performance, because three important things are at stake: Biker's honour, Buyer's reputation and our Pride.

ATROX MANAGMENT





2016

2017

Welcome to the **ATROX 2017**



Leather Suits I Men **1 - 5**
Leather Suits I Women **6**



Leather Jacket I Men **7 - 21**
Leather Jacket I Women **22 - 24**



Leather Trousers I Men **25 - 28**



Textile 2 Piece Suit I Men **29**
Textile Short Jackets I Men **30 - 41**
Textile Long Jackets I Men **42 - 51**
Summer Textile Jackets I Men **52 - 58**
Textile Jackets I Women **59 - 67**
Summer Textile Jackets I Women **68 - 70**



Air-Bag Textile Jackets I Men **71 - 72**
Air-Bag Mesh Textile Jackets I Men **73**
Air-Bag Textile Vests I Men **74**



Textile Trousers I Men **75 - 80**
Textile Trousers I Women **81 - 82**



Soft-Shell Textile Jackets I Men **83 - 93**
Soft-Shell Textile Jackets I Women **94 - 97**
Soft-Shell Textile Trousers I Men **98**
Soft-Shell Textile Trousers I Women **99**



Kevlar Denim Jackets I Men **100**
Kevlar Denim Trousers I Men **101**
Kevlar Denim Jackets & Trousers I Women **102**



Rain Wears I Men **103 - 105**
Rain Wears Transparent PVC **106**
Rain Wears I Women **107**



Safety Textile Vests **108**
Fleece Hoodies **109 - 111**
T-Shirt **111**



Protector Armors **112 - 116**
Kids Protector Armors **117**
Protector Vests & Back Protectors **118**
Protector Shorts **119**
Protectors **120**
Kidney Belts **121**



Winter Leather & Textile Gloves **122 - 129**
Leather & Textile Gloves **130 - 146**
Leather & Textile Gloves I Women **147 - 152**
CE Approved by Ricotest Gloves **153 - 155**



Endura Textile Jackets **156 - 158**
Endura Textile Trousers **159**
MX Jerseys & Trousers **160 - 168**
Trial Jerseys, Trousers & Gloves **169 - 170**
MX Gloves **171 - 175**



Feet Guards I Men **176 - 182**
Feet Guards I Women **183**



Luggage **184 - 185**
Textile Back-Pack **186**
Textile Travel Luggage **187**
Leather Luggage **188 - 189**

- Face Masks **190**
- Under Garments **191**
- Inner Protectors **192**
- Pantone Colors **193**
- Measurement Fit **194 - 195**



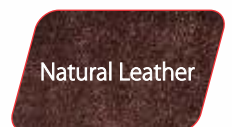
ENGINEERING
SECOND
SKIN

ESSENTIAL MANUFACTURING GUIDE

MaxDura fabric is a high quality polyamide fabric made of cut and repeated verponnen fibers . In his slightly textured, natural woven look, it is comfortable to wear and is significantly better than other nylon materials. In this extreme wear and anti-friction material, there are different Mabe of yarn strong, known under the abbreviation (Deiner). ATROX processed only MaxDura with a Quality of at least 500-D, 600-D and 1000-D, thus bringing the safety standard at a very high level. The highest thread Strong, 1000-D MaxDura is used mainly to falling bodies.



Cowhide is used for overused clothing and accessories. It is extremely abrasion resistant. Natural process on cowhide skin refers to particularly soft-leather. Some of Garments, Gloves proceed with Kangaroo leather, which extreme wear and abrasion resistant. But is ultra-light and soft.



Soft Shells offer a comfortable and soft-touch fit for bikers. It's Breathable, Waterproof and Windproof. They are also highly breathability, elastic, soft and freedom of movement. Soft Shells are ideal with sublimations in garments, gloves and as removable inner jackets and functional Jackets.



Reissa® is a functional fabric with breathable membrane with high sensitivity concerning weather conditions. It is an advanced textile with a highly developed specific polyurethane resin coating or membrane. This technology creates an extremely thin waterproof coating or membrane that is light weight for wearing comfort but extremely durable. It is highly resistant to rain, wind and snow while maintaining breathability. It is very flexible and has a comfortable soft touch. ATROX is using it in many of their textile jackets.



PD Fabric is used in lining. It is scratch and abrasion resistant, and lighter than natural silk. ATROX used own PD fabric designs with branding as per customers' demands.



At night and darkness Reflective material improve the visibility of motorcyclists considerably. Reflective materials have an offense, ultra-wide angle Ruck beam system of catadioptric glass beads.



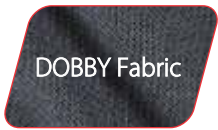
Dublan fabric is a high-tech material from strongly entwined polyamide yarn. The material is very abrasion resistant and has a low Wear on. It is created especially for extreme weather conditions and a harsh environment. Is used primarily as reinforcement before on elbows, shoulders and knees.



Rip-Stop fabric offers Rain Wears that is Breathable, Water-proof and Wind-proof fit for bikers by ATROX. They are also highly breathable, soft and freedom of movement.



Polyamide is a fully strong strength level of fabric. He is extreme wear and abrasion resistant and hardly absorbs moisture. Especially ATROX puts on jackets and trousers from 420-D with 900-D Dobby for reinforcements.



Denim is the original jeans stuff from smooth cotton fabric. Cotton is soft, but also very stable, soft, and comfortable to wear. ATROX jeans will only high-quality and more resistant denim weighing 11.5 - 12 oz used. Reinforced warden ATROX jeans with Du-pont Kevlar-Material.



The DuPont KEVLAR material combined with strong weight. KEVLAR is as extreme abrasion and reibfaste material is five times stronger than steel at the same weight. Thus, the use of KEVLAR is ideal for motorcycle clothing and is used mainly to falling bodies as reinforcement. Therefore KEVLAR is also used as a heat shield on the calf of Textihosen



The CE Approved Garments, Protector Armors and Gloves are manufacturer's declaration that the product meets the requirements of the applicable EC directives. Officially, "CE" is an abbreviation of **Conformité Européenne**, meaning "European Conformity".

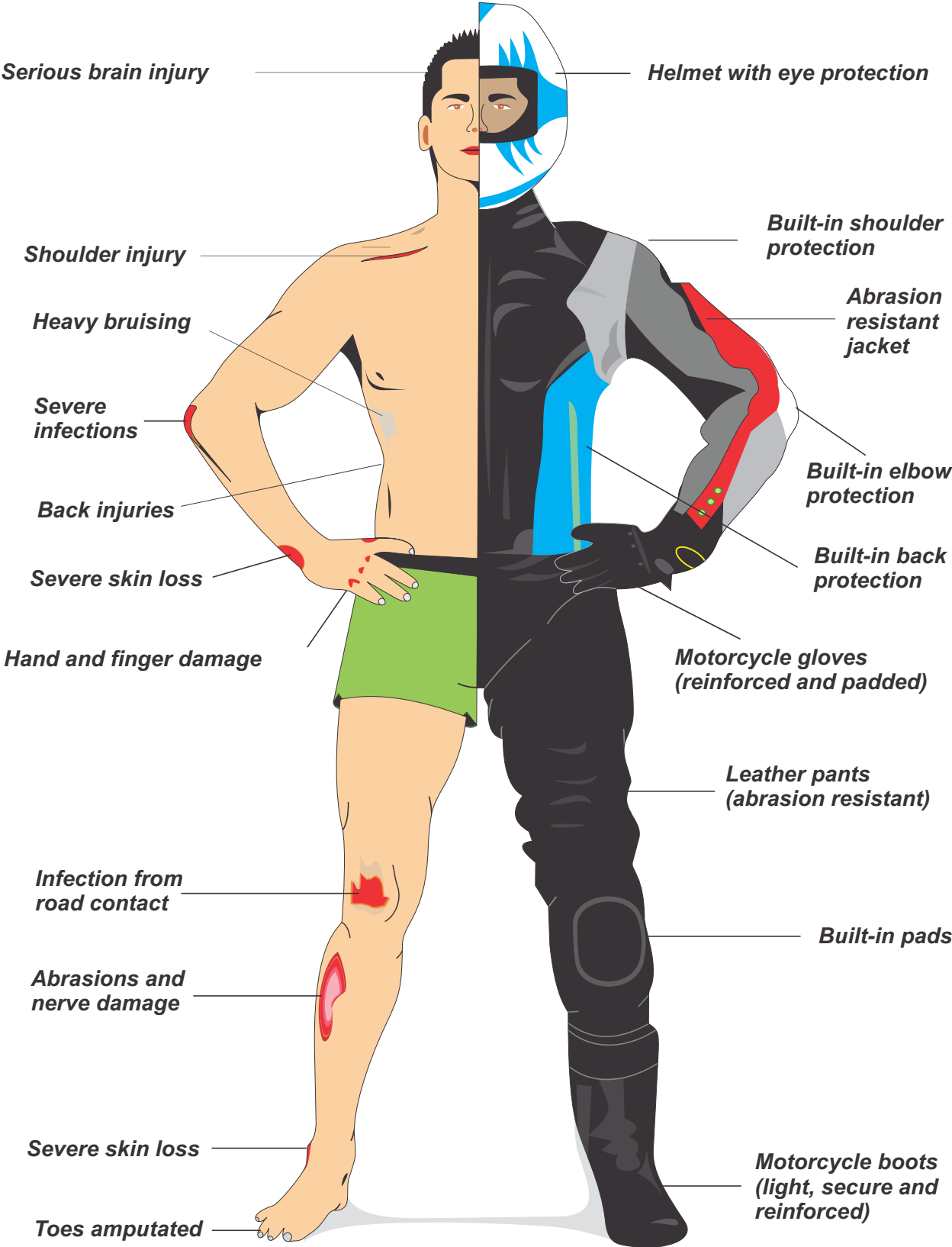
ATROX is following all CE standards, while manufacturing Moto gear. We are also using CE approved Protectors by RICOTEST Italy in moto gear.



Moto Life Clothing

Without safety gear

With  Gear





LEATHER SUIT

Motorcycle leather suits are preferably designed and made to give divine safety and everlasting taste of biking on diverse tracks. Suits are available in multiple colors as moods for different seasons and sizes.

Choice makes difference...

Leather's selection, color's selection, sizing selection, all are select-ably important in wearing dresses to enjoy your adventurous drive. Every dot of picture is important to portrait the image, beautifies. Here are designs are planned, patternised and stitched accordingly.

Customizing Leather Suit



Leather 2 Piece Suits | Men



NF-1000



Black

Neon-Green

Grey



White

Red

Grey



NF-1001

- **Out Shell**
 Cowhide "Matte / Naked" Leather / Stretchable Fabric / Steel Mould On Shoulder / Kevlar Hump
- **Liner**
 Air Mesh "soft touch"
- **Ventilation**
 Perforated Leather Front & Back
- **Protection**
 Plastic Protectors "CE Level-1 & 2 Approved" on the Shoulder, Elbow, Back, Thigh & Knee / Removable Slider
- **High Visibility**
 Reflector Front & Back
- **Other Features**
 Neoprene Collar & Cuff with Auto Lock Zip / Adjustable Waist / TPR & Printed Brands



Sizes Men : 48 to 60
 Women: 36 to 42

Measurement Fit: Page 194

Color options : Page 193

Weather : 4 Seasons

Leather 2 Piece Suits | Men



NF-1002



Black

Red

Grey



Grey

Neon-Green

Black



NF-1003

- Out Shell**
 Cowhide "Matte / Naked" Leather (Printed Leather) / Stretchable Fabric / Steel Mould On Shoulder / Kevlar Hump
- Liner**
 Air Mesh "soft touch"
- Ventilation**
 Perforated Leather Front & Back
- Protection**
 Plastic Protectors "CE Level-1 & 2 Approved" on the Shoulder, Elbow, Back, Thigh & Knee / Removable Slider
- High Visibility**
 Reflector Front & Back
- Other Features**
 Neoprene Collar & Cuff with Auto Lock Zip / Adjustable Waist / TPR & Printed Brands



Sizes Men : 48 to 60
Women: 36 to 42

Measurement Fit: Page 194

Color options : Page 193

Weather : 4 Seasons

Leather 2 Piece Suits | Men



Grey

Red

Black

NF-1004



Grey

Neon-Green

Black



NF-1005

- Out Shell**
 Cowhide "Matte / Naked" Leather / Stretchable Fabric / Steel Mould On Shoulder / Kevlar Hump
- Liner**
 Air Mesh "soft touch"
- Ventilation**
 Perforated Leather Front & Back
- Protection**
 Plastic Protectors "CE Level-1 & 2 Approved" on the Shoulder, Elbow, Back, Thigh & Knee / Removable Slider
- High Visibility**
 Reflector Front & Back
- Other Features**
 Neoprene Collar & Cuff with Auto Lock Zip / Adjustable Waist / TPR & Printed Brands



Sizes Men : 48 to 60
 Women: 36 to 42

Measurement Fit: Page 194

Color options : Page 193

Weather : 4 Seasons

Leather 2 Piece Suits | Men



NF-1006



Black Neon-Green Grey



Grey Red Black



NF-1007

- Out Shell**
 Cowhide "Matte / Naked" Leather / Stretchable Fabric / Steel Mould On Shoulder / Kevlar Hump
- Liner**
 Air Mesh "soft touch"
- Ventilation**
 Perforated Leather Front & Back
- Protection**
 Plastic Protectors "CE Level-1 & 2 Approved" on the Shoulder, Elbow, Back, Thigh & Knee / Removable Slider
- High Visibility**
 Reflector Front & Back
- Other Features**
 Neoprene Collar & Cuff with Auto Lock Zip / Adjustable Waist / TPR & Printed Brands



Sizes Men : 48 to 60
Women: 36 to 42

Measurement Fit: Page 194

Color options : Page 193

Weather : 4 Seasons

Leather 1 Piece Suits | Men



NF-1040



Black

Red

Grey



NF-1041



Grey

Red

Black

- **Out Shell**
Cowhide "Matte / Naked" Leather / Stretchable Fabric / Steel Mould On Shoulder / EVA "Foam" Hump
- **Lining**
Removable Air Mesh "soft touch"
- **Ventilation**
Perforated Leather Front & Back
- **Protection**
Plastic Protectors "CE Level-1 & 2 Approved" on the Shoulder, Elbow, Back, Thigh & Knee / Removable Slider
- **High Visibility**
Reflector Front & Back
- **Other Features**
Neoprene Collar & Cuff with Auto Lock Zip / TPR & Printed Brands



Sizes Men : 48 to 60
Women: 36 to 42

Measurement Fit: Page 194

Color options : Page 193

Weather : 4 Seasons

Leather 2 Piece Suits | Women



NF-1070



Neon-Green

Pink

Grey



Grey

Pink

Red



NF-1071

- **Out Shell**
Cowhide "Matte / Naked" Leather / Stretchable Fabric / Kevlar Hump
- **Liner**
Air Mesh "soft touch"
- **Ventilation**
Perforated Leather Front & Back
- **Protection**
Plastic Protectors "CE Level-1 & 2 Approved" on the Shoulder, Elbow, Back, Thigh & Knee / Removable Slider
- **High Visibility**
Reflector Front & Back
- **Other Features**
Neoprene Collar & Cuff with Auto Lock Zip / Adjustable Waist / TPR & Printed Brands



Sizes: Women: 36 to 42

Measurement Fit: Page 194

Color options : Page 193

Weather : 4 Seasons



LEATHER JACKET

With safety of adventurous drive, aesthetics, colors, design, trend and fashion of upper/accessorial dressing attracts a lot!

A vast range of leather jackets is designed to please the flavors.

Our duty is to take care of you!!

Internal layers are stitched preferably on the basis of safety purposes, outer layers are stitched on safety, style and designing purposes. Leather Jackets will touch your comfort zone that resists both wear and tear and also the forces of nature. Comfort warm/cool while prioritizing safety because your safety persists at our absolute cutting edge.



Customizing Leather Jacket



Leather Jackets | Men



NF-1100



Grey

Red

White



NF-1101



Grey

Neon-Green

Black

Out Shell

Cowhide "Matte / Naked" Leather Perforated / (Printed Leather) / Stretchable Fabric / Steel Mould on Shoulder

Liner

Air Mesh "soft touch"

Lining

Removable Thermal Quilt / Soft Shell Extra Panel / Mobile & Stuff Pocket

Ventilation

Perforated Leather Front & Back / Air-vent Auto Lock Zips

Protection

EVO Protectors "CE Level-1 & 2 Approved" on the Shoulder, Elbow & Back

High Visibility

Reflector Front & Back

Other Features

Neoprene Collar & Cuff with Auto Lock Zip / Adjustable Waist / TPR & Embossed Brands / Long & Short Connection Zipper for Trousers



Sizes Men : XS to 4XL
Women: XS to XL

Measurement Fit: Page 194

Color options : Page 193

Weather : 4 Seasons

Leather Jackets | Men



NF-1102



Grey

Red

White



NF-1103



Grey

Neon-Green

Red

- Out Shell**
Cowhide "Matte / Naked" Leather Perforated / (Printed Leather) / Sublimation MaxDura / Stretchable Fabric
- Liner**
Air Mesh "soft touch"
- Lining**
Removable Thermal Quilt / Soft Shell Extra Panel / Mobile & Stuff Pocket
- Ventilation**
Perforated Leather Front & Back / Air-vent
Auto Lock Zips
- Protection**
EVO Protectors "CE Level-1 & 2 Approved" on the Shoulder, Elbow & Back
- High Visibility**
Reflector Front & Back
- Other Features**
Neoprene Collar & Cuff with Auto Lock Zip / Adjustable Waist / TPR & Embossed Brands
Long & Short Connection Zipper for Trousers



Sizes Men : XS to 4XL
Women: XS to XL

Measurement Fit: Page 194

Color options : Page 193

Weather : 4 Seasons



NF-1104



Grey

Red

White



NF-1105



Grey

Neon-Green

White

- **Out Shell**
Cowhide "Matte / Naked" Leather (Printed Leather) / Stretchable Fabric
- **Liner**
Air Mesh "soft touch"
- **Lining**
Removable Thermal Quilt / Soft Shell Extra Panel / Mobile & Stuff Pockets
- **Ventilation**
Perforated Leather Front & Back / Air-vent
Auto Lock Zips
- **Protection**
EVO Protectors "CE Level-1 & 2 Approved" on the Shoulder, Elbow & Back
- **High Visibility**
Reflector Front & Back
- **Other Features**
Neoprene Collar & Cuff with Auto Lock Zip / Adjustable Waist / TPR & Embossed Brands
Long & Short Connection Zipper for Trousers



Sizes Men : XS to 4XL
Women: XS to XL

Measurement Fit: Page 194

Color options : Page 193

Weather : 4 Seasons

Leather Jackets | Men



NF-1106



Grey

Red

White



NF-1107



Grey

Neon-Green

White

- Out Shell**
 Cowhide "Matte / Naked" Leather (Printed Leather) / Sublimation Fabric / Soft-Shell Fabric / Stretchable Fabric / Steel Mould on Shoulder
- Liner**
 Air Mesh "soft touch"
- Lining**
 Removable Thermal Quilt / Soft Shell Extra Panel / Mobile & Stuff Pockets
- Ventilation**
 Perforated Leather Front & Back / Air-vent Auto Lock Zips
- Protection**
 EVO Protectors "CE Level-1 & 2 Approved" on the Shoulder, Elbow & Back
- High Visibility**
 Reflector Front & Back
- Other Features**
 Neoprene Collar & Cuff with Auto Lock Zip / Adjustable Waist / TPR & Embossed Brands / Long & Short Connection Zipper for Trousers



Sizes Men : XS to 4XL
Women: XS to XL

Measurement Fit: Page 194

Color options : Page 193

Weather : 4 Seasons



NF-1108



Grey

Red

White



NF-1109



Grey

Neon-Green

Black

- **Out Shell**
Cowhide "Matte / Naked" Leather (Printed Leather) / Stretchable Fabric
- **Liner**
Air Mesh "soft touch"
- **Lining**
Removable Thermal Quilt / Soft Shell Extra Panel / Mobile & Stuff Pockets
- **Ventilation**
Perforated Leather Front & Back / Air-vent
Auto Lock Zips
- **Protection**
EVO Protectors "CE Level-1 & 2 Approved" on the Shoulder, Elbow & Back
- **High Visibility**
Reflector Front & Back
- **Other Features**
Neoprene Collar & Cuff with Auto Lock Zip / Adjustable Waist / TPR & Embossed Brands
Long & Short Connection Zipper for Trousers



Sizes Men : XS to 4XL
Women: XS to XL

Measurement Fit: Page 194

Color options : Page 193

Weather : 4 Seasons

CE Approved Jacket



NF-1110



Grey

Neon-Green

White



NF-1111



Grey

Red

White

- **Out Shell**
Cowhide "Matte / Naked" Leather Perforated / Stretchable Fabric
- **CE Approved: YES**
EN13595-1
- **Liner**
Air Mesh "soft touch"
- **Lining**
Removable Thermal Quilt / Soft Shell Extra Panel / Mobile & Stuff Pockets
- **Ventilation**
Perforated Leather Front & Back / Air-vent Auto Lock Zips
- **Protection**
EVO Protectors "CE Level-1 & 2 Approved" on the Shoulder, Elbow & Back
- **High Visibility**
Reflector Front & Back
- **Other Features**
Neoprene Collar & Cuff with Auto Lock Zip / Adjustable Waist / TPR & Embossed Brands Long & Short Connection Zipper for Trousers



Sizes Men : XS to 4XL
Women: XS to XL

Measurement Fit: Page 194

Color options : Page 193

Weather : 4 Seasons



NF-1112



NF-1113



Black

Golden

■ Out Shell
Cowhide "Naked" Leather / Denim / Stretchable Fabric

■ Liner
Air Mesh "soft touch"

■ Lining
Removable Thermal Quilt / Soft Shell Extra Panel /
Mobile & Stuff Pockets

■ Ventilation
Air-vent Auto Lock Zips

■ Protection
EVO Protectors "CE Level-1 & 2 Approved" on the
Shoulder, Elbow & Back

■ High Visibility
Reflector Front & Back

■ Other Features
Neoprene Collar & Cuff with Auto Lock Zip /
Adjustable Waist / Embossed Brands
Long & Short Connection Zipper for Trouser



Sizes Men : XS to 4XL
Women: XS to XL

Measurement Fit: Page 194

Color options : Page 193

Weather : 4 Seasons

CE Approved Jacket



NF-1114



Neon-Green

Red

Black



NF-1115



Neon-Green

Red

White

■ Out Shell
Cowhide "Natural" Leather / Stretchable Fabric

■ CE Approved: **YES**
EN13595-1

■ Liner
Air Mesh "soft touch"

■ Lining
Removable Thermal Quilt / Soft Shell Extra Panel /
Mobile & Stuff Pocket

■ Ventilation
Air-vent Auto Lock Zips

■ Protection
EVO Protectors **"CE Level-1 & 2 Approved"** on the
Shoulder, Elbow & Back

■ Other Features
Neoprene Collar & Cuff with Auto Lock Zip /
Adjustable Waist / Embossed Brands
Long & Short Connection Zipper for Trousers



Sizes Men : XS to 4XL
Women: XS to XL

Measurement Fit: Page 194

Color options : Page 193

Weather : 4 Seasons

Leather Jackets | Men



NF-1116



Grey

Neon-Green

Red



NF-1117



Brown/Black

Brown/Golden

Black

- Out Shell
Cowhide "Matte / Naked" Leather / Stretchable Fabric
- Liner
Air Mesh "soft touch"
- Lining
Removable Thermal Quilt / Soft Shell Extra Panel / Mobile & Stuff Pocket
- Ventilation
Perforated Leather Front & Back / Air-vent
Auto Lock Zips
- Protection
EVO Protectors "CE Level-1 & 2 Approved" on the
Shoulder, Elbow & Back
- High Visibility
Reflector Front & Back
- Other Features
Neoprene Collar & Cuff with Auto Lock Zip /
Adjustable Waist / TPR & Embossed Brands
Long & Short Connection Zipper for Trouser



Sizes Men : XS to 4XL
Women: XS to XL

Measurement Fit: Page 194

Color options : Page 193

Weather : 4 Seasons

Leather Jackets | Men



NF-1118



Grey

Red

White



NF-1119



Grey

Neon-Green

Red

■ **Out Shell**
Cowhide "Natural" Leather / Stretchable Fabric

■ **Liner**
Air Mesh "soft touch"

■ **Lining**
Removable Thermal Quilt / Soft Shell Extra Panel /
Mobile & Stuff Pockets

■ **Ventilation**
Air-vent Auto Lock Zips

■ **Protection**
EVO Protectors "CE Level-1 & 2 Approved" on the
Shoulder, Elbow & Back

■ **Other Features**
Neoprene Collar & Cuff with Auto Lock Zip /
Adjustable Waist / Embossed Brands
Long & Short Connection Zipper for Trousers



Sizes Men : XS to 4XL
Women: XS to XL

Measurement Fit: Page 194

Color options : Page 193

Weather : 4 Seasons



Black

NF-1120



Brown

NF-1121

- Out Shell

Cowhide "Naked" Leather / Denim / Stretchable Fabric
- Liner

Air Mesh "soft touch"
- Lining

Removable Thermal / Wind-Stopper Quilt / Soft-Shell Extra Panel / Mobile & Stuff Pocket
- Ventilation

Air-vent Auto Lock Zips
- Protection

EVO Protectors "CE Level-1 & 2 Approved" on the Shoulder, Elbow & Back
- High Visibility

Reflector Front & Back
- Other Features

Neoprene Collar & Cuff with Auto Lock Zip / Adjustable Waist / Embossed Brands / Long & Short Connection Zipper for Trousers



Sizes Men : XS to 4XL
Women: XS to XL

Measurement Fit: Page 194

Weather : 4 Seasons

Leather Jackets | Men



White

Neon-Green

Red

NF-1122



White

Neon-Green

Red

NF-1123

- **Out Shell**
Cowhide "Naked" Leather / Stretchable Fabric
- **Liner**
Air Mesh "soft touch"
- **Lining**
Removable Thermal Quilt / Soft Shell Extra Panel / Mobile & Stuff Pocket
- **Ventilation**
Air-vent Auto Lock Zips
- **Protection**
EVO Protectors "CE Level-1 & 2 Approved" on the Shoulder, Elbow & Back
- **High Visibility**
Reflector Front & Back
- **Other Features**
Neoprene Collar & Cuff with Auto Lock Zip / Adjustable Waist / Embossed Brands / Long & Short Connection Zipper for Trouser



Sizes Men : XS to 4XL
Women: XS to XL

Measurement Fit: Page 194

Color options : Page 193

Weather : 4 Seasons

Leather Jackets | Men



Brown

NF-1124



Black

NF-1125

- Out Shell

Cowhide "Natural" Leather / Fur
- Liner

Air Mesh "soft touch"
- Lining

Removable Thermal Quilt / Soft Shell Extra Panel / Mobile & Stuff Pocket
- Ventilation

Air-vent Auto Lock Zips
- Protection

EVO Protectors "CE Level-1 & 2 Approved" on the Shoulder, Elbow & Back
- High Visibility

Reflector Front & Back
- Other Features

Neoprene / Fur Collar & Cuff with Auto Lock Zip / Adjustable Waist / Embossed Brands Long & Short Connection Zipper for Trousers



Sizes Men : XS to 4XL
Women: XS to XL

Measurement Fit: Page 194

Weather : 4 Seasons

Leather Jackets | Men



Brown

NF-1126



Black

NF-1127

- **Out Shell**
Cowhide "Naked / Charcoal" Leather / Stretchable Fabric
- **Liner**
Air Mesh "soft touch"
- **Lining**
Removable Thermal Quilt / Soft Shell Extra Panel / Mobile & Stuff Pocket
- **Ventilation**
Air-vent Auto Lock Zips
- **Protection**
EVO Protectors "CE Level-1 & 2 Approved" on the Shoulder, Elbow & Back
- **High Visibility**
Reflector Front & Back
- **Other Features**
Neoprene Collar & Cuff with Auto Lock Zip / Adjustable Waist / Embossed Brands



Sizes Men : XS to 4XL
Women: XS to XL

Measurement Fit: Page 194

Weather : 4 Seasons



NF-1128



Black

Neon-Green

Red



NF-1129



Black

- Out Shell**
 Cowhide "Naked / Charcoal" Leather / Stretchable Fabric
- Liner**
 Air Mesh "soft touch"
- Lining**
 Removable Thermal Quilt / Soft Shell Extra Panel / Mobile & Stuff Pocket
- Ventilation**
 Air-vent Auto Lock Zips
- Protection**
 EVO Protectors "CE Level-1 & 2 Approved" on the Shoulder, Elbow & Back
- High Visibility**
 Reflector Front & Back
- Other Features**
 Neoprene Collar & Cuff with Auto Lock Zip / Adjustable Waist / Embossed Brands / Long & Short Connection Zipper for Trouser



Sizes Men : XS to 4XL
 Women: XS to XL

Measurement Fit: Page 194

Color options : Page 193

Weather : 4 Seasons



NF-1170



Pink



Neon-Green



Red



NF-1171



White



Neon-Green



Red

- **Out Shell**
Cowhide "Natural" Leather / Soft-Shell "Breathable" / Stretchable Fabric
- **Liner**
Air Mesh "soft touch"
- **Lining**
Removable Thermal Quilt / Soft Shell Extra Panel / Mobile & Stuff Pocket

- **Ventilation**
Air-vent Auto Lock Zips
- **Protection**
EVO Protectors "CE Level-1 & 2 Approved" on the Shoulder, Elbow & Back
- **High Visibility**
Reflector Front & Back
- **Other Features**
Neoprene Collar & Cuff with Auto Lock Zip / Adjustable Waist / TPR & Embossed Brands / Long & Short Connection Zipper for Trousers



Sizes: Women: XS to XL

Measurement Fit: Page 194

Color options : Page 193

Weather : 4 Seasons

Leather Jackets | Women



CE Approved Jacket



NF-1172



White Red Neon-Green



CE Approved Jacket



NF-1173



Black Red Neon-Green

- Out Shell
Cowhide "Natural" Leather / Stretchable Fabric
 - CE Approved: **YES**
EN13595-1
 - Liner
Air Mesh "soft touch"
 - Lining
Removable Thermal Quilt / Soft Shell Extra Panel / Mobile & Stuff Pocket
- Ventilation
Air-vent Auto Lock Zips
 - Protection
EVO Protectors "CE Level-1 & 2 Approved" on the Shoulder, Elbow & Back
 - High Visibility
Reflector Front & Back
 - Other Features
Neoprene Collar & Cuff with Auto Lock Zip / Adjustable Waist / TPR & Embossed Brands Long & Short Connection Zipper for Trouser



Sizes: Women: XS to XL
Measurement Fit: Page 194
Color options : Page 193
Weather : 4 Seasons



NF-1174



White

Red

Neon-Green



NF-1175



White

Red

Neon-Green

- Out Shell**
Cowhide "Natural" Leather / Soft-Shell "Breathable" / Sublimation MaxDura / Stretchable Fabric
- Liner**
Air Mesh "soft touch"
- Lining**
Removable Thermal Quilt / Soft Shell Extra Panel / Mobile & Stuff Pocket
- Ventilation**
Air-vent Auto Lock Zips
- Protection**
EVO Protectors "CE Level-1 & 2 Approved" on the Shoulder, Elbow & Back
- High Visibility**
Reflector Front & Back
- Other Features**
Neoprene Collar & Cuff with Auto Lock Zip / Adjustable Waist / TPR & Embossed Brands / Long & Short Connection Zipper for Trouser

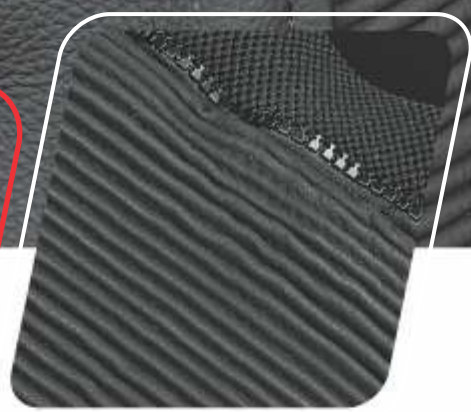


Sizes: Women: XS to XL

Measurement Fit: Page 194

Color options : Page 193

Weather : 4 Seasons



LEATHER TROUSER

Motorcycle Leather Trousers are Strong skin & color-full protection gear for all kinds of riding. The trendiest safety garment. Light or medium weight Leather trousers are contemplated in a range of designs and colors. The range of designs and colors is virtually inexhaustible and this range is made for your safety and aesthetics. Trousers are stitched with diverse adjustability and soothing panels.

Customizing Leather Trouser



Leather Trousers | Men



NF-1200



White Red Grey



Grey Neon-Green Red



NF-1201

- Out Shell
Cowhide "Natural / Matte" Leather / Stretchable Panels
- Liner
Air Mesh "soft touch"
- Ventilation
Air-vent Auto Lock Zips
- Protection
EVO Protectors "CE Level-1 & 2 Approved" on the Knee & Thigh / Removable Knee Slider
- High Visibility
Reflector Front & Back
- Other Features
Adjustable Waist / TPR & Embossed Brands
Long & Short Connection Zipper for Jacket



Sizes Men : 28 to 40
Women: 24 to 32

Measurement Fit: Page 195

Color options : Page 193

Weather : 4 Seasons

Leather Trousers | Men



NF-1202



Black



Neon-Green



Grey



NF-1203



Grey



Neon-Green



Red

■ Out Shell
Cowhide "Natural / Matte" Leather / Stretchable Panels

■ Liner
Air Mesh "soft touch"

■ Ventilation
Air-vent Auto Lock Zips

■ Protection
EVO Protectors "CE Level-1 & 2 Approved" on the Knee & Thigh / Removable Knee Slider

■ High Visibility
Reflector Front & Back

■ Other Features
Adjustable Waist / TPR & Embossed Brands
Long & Short Connection Zipper for Jacket



Sizes Men : 28 to 40
Women: 24 to 32

Measurement Fit: Page 195

Color options : Page 193

Weather : 4 Seasons

Leather Trousers | Men



NF-1204



Red Neon-Green Grey



NF-1205



Grey Neon-Green White

- Out Shell**
 Cowhide "Natural / Matte" Leather / Stretchable Panels
- Ventilation**
 Air-vent Auto Lock Zips
- Protection**
 EVO Protectors "CE Level-1 & 2 Approved" on the Knee & Thigh / Removable Knee Slider
- High Visibility**
 Reflector Front & Back
- Other Features**
 Adjustable Waist / TPR & Embossed Brands
 Long & Short Connection Zipper for Jacket
- Liner**
 Air Mesh "soft touch"



Sizes Men : 28 to 40
 Women: 24 to 32
Measurement Fit: Page 195
Color options : Page 193
Weather : 4 Seasons

Leather Pants | Men



NF-1250



Brown



NF-1251



Brown

■ Out Shell
Cowhide "Natural" Leather

■ Liner
Polyester "soft Feel"

■ Ventilation
Air-vent Auto Lock Zips

■ Protection
EVO Protectors "CE Level-1 & 2 Approved" on the Knee & Thigh

■ Other Features
Adjustable Waist



Sizes Men : 28 to 40
Women: 24 to 32

Measurement Fit: Page 195

Weather : 4 Seasons



TEXTILE JACKET

Motorcycle Textile jackets are light-weight & color-full protection gear for all kinds of riding. The trendiest safety garment.

In field soldiers, civil helpers, crisis interveners, emergency officers need protective coverings on their vulnerable parts during their jobs. Field jackets are particularly contemplated by light or medium-weight waterproof coated cotton. Unique colors, designs, comfortable fabric and your protection are our goals.

Customizing Textile Jacket



Textile 2 Piece Suit | Men



Black

Red

Grey



Black

Red

Grey

NF-2000

- Out Shell**
 MaxDura 600-D & 1000-D / Dublin 2500-D
 Heavy Fabric / Stretchable Panels
- Liner**
 Water-Proof Membrane "with Sealing Tape"/
 Air-Mesh "soft touch"
- Lining**
 Removable Thermal Quilt / Soft Shell Extra Panel /
 Mobile & Stuff Pocket
- Ventilation**
 Air-vent "Water-Proof" Auto Lock Zips Front & Back
- Protection**
 EVO Protectors "CE Level-1 & 2 Approved" on the
 Shoulder, Elbow & Back / Thigh & Knee
- High Visibility**
 Reflector Heat Transfer Front & Back
- Other Features**
 Neoprene Collar & Cuff with Auto Lock Zip /
 Adjustable Sleeve & Waist / TPR & Reflector Brands /
 Long & Short Connection Zipper to Complete Suit



Sizes Men : XS to 4XL
 Women: XS to XL

Measurement Fit: Page 194 & 195

Color options : Page 193

Weather : 4 Seasons



NF-2100



Grey

Neon-Green

White



NF-2101



Black

Neon-Green

Grey

- Out Shell**
 MaxDura 600-D & 1000-D / Dublin 2500-D
 Heavy Fabric / Sublimation Fabric
- Liner**
 Water-Proof Membrane "with Sealing Tape" /
 Air-Mesh "soft touch"
- Lining**
 Removable Thermal Quilt / Soft Shell Extra Panel /
 Mobile & Stuff Pocket
- Ventilation**
 Air-vent "Water-Proof" Auto Lock Zips Front & Back
- Protection**
 EVO Protectors "CE Level-1 & 2 Approved" on the
 Shoulder, Elbow & Back
- High Visibility**
 Reflector Heat Transfer Front & Back
- Other Features**
 Neoprene Collar & Cuff with Auto Lock Zip /
 Adjustable Sleeve & Waist / TPR & Reflector Brands
 Long & Short Connection Zipper for Trousers



Sizes Men : XS to 4XL
 Women: XS to XL

Measurement Fit: Page 194

Color options : Page 193

Weather : 4 Seasons

Textile Short Jackets | Men



NF-2102



Blue

Neon-Green

Red



NF-2103



Grey

Neon-Green

Red

■ **Out Shell**
MaxDura 600-D & 1000-D / Dublin 2500-D
Heavy Fabric / Sublimation Fabric

■ **Liner**
Water-Proof Membrane "with Sealing Tape"/
Air-Mesh "soft touch"

■ **Lining**
Removable Thermal Quilt / Soft Shell Extra Panel /
Mobile & Stuff Pocket

■ **Ventilation**
Air-vent "Water-Proof" Auto Lock Zips Front & Back

■ **Protection**
EVO Protectors "CE Level-1 & 2 Approved" on the
Shoulder, Elbow & Back

■ **High Visibility**
Reflector Heat Transfer Front & Back

■ **Other Features**
Neoprene Collar & Cuff with Auto Lock Zip /
Adjustable Sleeve & Waist / TPR & Reflector Brands
Long & Short Connection Zipper for Trousers



Sizes Men : XS to 4XL
Women: XS to XL

Measurement Fit: Page 194

Color options : Page 193

Weather : 4 Seasons



NF-2104



Grey

Red

Black



NF-2105



Grey

Neon-Green

White

■ Out Shell

MaxDura 600-D & 1000-D / Dublan 2500-D
Heavy Fabric / Reflector Heat Transfer Designs

■ Liner

Water-Proof Membrane "with Sealing Tape" /
Air-Mesh "soft touch"

■ Lining

Removable Thermal Quilt / Soft Shell Extra Panel /
Mobile & Stuff Pocket

■ Ventilation

Air-vent "Water-Proof" Auto Lock Zips Front & Back

■ Protection

EVO Protectors "CE Level-1 & 2 Approved" on the
Shoulder, Elbow & Back

■ High Visibility

Reflector Heat Transfer Front & Back

■ Other Features

Neoprene Collar & Cuff with Auto Lock Zip /
Adjustable Sleeve & Waist / TPR & Reflector Brands
Long & Short Connection Zipper for Trouser



Sizes Men : XS to 4XL
Women: XS to XL

Measurement Fit: Page 194

Color options : Page 193

Weather : 4 Seasons

Textile Short Jackets | Men



NF-2106



NF-2107

- Out Shell**
 MaxDura 600-D & 1000-D / Dublin 2500-D
 Heavy Fabric / Reflector Heat Transfer Designs
- Liner**
 Water-Proof Membrane "with Sealing Tape" /
 Air-Mesh "soft touch"
- Lining**
 Removable Thermal Quilt / Soft Shell Extra Panel /
 Mobile & Stuff Pocket
- Ventilation**
 Air-vent "Water-Proof" Auto Lock Zips Front & Back
- Protection**
 EVO Protectors "CE Level-1 & 2 Approved" on the
 Shoulder, Elbow & Back
- High Visibility**
 Reflector Heat Transfer Front & Back
- Other Features**
 Neoprene Collar & Cuff with Auto Lock Zip /
 Adjustable Sleeve & Waist / TPR & Reflector Brands
 Long & Short Connection Zipper for Trousers



Sizes Men : XS to 4XL
 Women: XS to XL

Measurement Fit: Page 194

Color options : Page 193

Weather : 4 Seasons



Grey

Neon-Green

Black

NF-2108



Sky-Blue

Red

Black

NF-2109

- Out Shell**
 MaxDura 600-D & 1000-D / Dublan 2500-D
 Heavy Fabric / Steel & Soft-Shell Mould on the Shoulder
- Liner**
 Water-Proof Membrane "with Sealing Tape" / Air-Mesh "soft touch"
- Lining**
 Removable Thermal Quilt / Soft Shell Extra Panel / Mobile & Stuff Pocket
- Ventilation**
 Air-vent "Water-Proof" Auto Lock Zips Front & Back
- Protection**
 EVO Protectors "CE Level-1 & 2 Approved" on the Shoulder, Elbow & Back
- High Visibility**
 Reflector Heat Transfer Front & Back
- Other Features**
 Neoprene Collar & Cuff with Auto Lock Zip / Adjustable Sleeve & Waist / TPR & Reflector Brands Long & Short Connection Zipper for Trousers



Sizes Men : XS to 4XL
Women: XS to XL

Measurement Fit: Page 194

Color options : Page 193

Weather : 4 Seasons



NF-2110



Grey

Red

Neon-Green



NF-2111



Grey

Red

Black

- **Out Shell**
MaxDura 600-D & 1000-D / Soft-Shell **"Breathable"** / Dublin 2500-D Heavy Fabric / Sublimation Fabric / Soft-Shell Mould on the Shoulder
- **Liner**
Water-Proof Membrane "with Sealing Tape" / Air-Mesh "soft touch"
- **Lining**
Removable Thermal Quilt / Soft Shell Extra Panel / Mobile & Stuff Pocket

- **Ventilation**
Air-vent "Water-Proof" Auto Lock Zips Front & Back
- **Protection**
EVO Protectors **"CE Level-1 & 2 Approved"** on the Shoulder, Elbow & Back
- **High Visibility**
Reflector Heat Transfer Front & Back
- **Other Features**
Neoprene Collar & Cuff with Auto Lock Zip / Adjustable Sleeve & Waist / TPR & Reflector Brands Long & Short Connection Zipper for Trousers



Sizes Men : XS to 4XL
Women: XS to XL

Measurement Fit: Page 194

Color options : Page 193

Weather : 4 Seasons



Grey

Red

Neon-Green

NF-2112



Grey

Red

Black

NF-2113

- **Out Shell**
MaxDura 600-D & 1000-D / Soft-Shell **"Breathable"** /
Dublan 2500-D Heavy Fabric / Soft-Shell Mould on
the Shoulder
- **Liner**
Water-Proof Membrane "with Sealing Tape" /
Air-Mesh "soft touch"
- **Lining**
Removable Thermal Quilt / Soft Shell Extra Panel /
Mobile & Stuff Pocket

- **Ventilation**
Air-vent "Water-Proof" Auto Lock Zips Front & Back
- **Protection**
EVO Protectors **"CE Level-1 & 2 Approved"** on the
Shoulder, Elbow & Back
- **High Visibility**
Reflector Heat Transfer Front & Back
- **Other Features**
Neoprene Collar & Cuff with Auto Lock Zip /
Adjustable Sleeve & Waist / TPR & Reflector Brands
Long & Short Connection Zipper for Trousers



Sizes Men : XS to 4XL
Women: XS to XL

Measurement Fit: Page 194

Color options : Page 193

Weather : 4 Seasons

Textile Short Jackets | Men



NF-2114



Sky-Blue

Black

Red



NF-2115



Black

Neon-Green

Red

- **Out Shell**
MaxDura 600-D & 1000-D / Soft-Shell **"Breathable"** /
Dublan 2500-D Heavy Fabric

- **Liner**
Water-Proof Membrane "with Sealing Tape"/
Air-Mesh "soft touch"

- **Lining**
Removable Thermal Quilt / Soft Shell Extra Panel /
Mobile & Stuff Pocket

- **Ventilation**
Air-vent "Water-Proof" Auto Lock Zips Front & Back

- **Protection**
EVO Protectors **"CE Level-1 & 2 Approved"** on the
Shoulder, Elbow & Back

- **High Visibility**
Reflector Heat Transfer Front & Back

- **Other Features**
Neoprene Collar & Cuff with Auto Lock Zip /
Adjustable Sleeve & Waist / TPR & Reflector Brands
Long & Short Connection Zipper for Trousers



Sizes Men : XS to 4XL
Women: XS to XL

Measurement Fit: Page 194

Color options : Page 193

Weather : 4 Seasons

CE Approved Jacket



NF-2116



Sky-Blue

Neon-Green

Red

Grey

■ CE Approved Jacket
EN 13595-1

■ Out Shell
Nylon 500-D & 1000-D / Dublan 2500-D Heavy
Fabric / Reflector

■ Liner
Reissa Membrane "Breathable" Air Mesh "soft touch"

■ Lining
Removable Thermal Quilt / Soft Shell Extra Panel /
Mobile & Stuff Pocket

■ Ventilation
Air-vent "Water-Proof" Auto Lock Zips Front & Back

■ Protection
EVO Protectors "CE Level-1 & 2 Approved" on the
Shoulder, Elbow & Back

■ High Visibility
Reflector Heat Transfer Front & Back

■ Other Features
Neoprene Collar & Cuff with Auto Lock Zip /
Adjustable Sleeve & Waist / TPR & Reflector Brands
Long & Short Connection Zipper for Trousers



Sizes Men : XS to 4XL
Women: XS to XL

Measurement Fit: Page 194

Color options : Page 193

Weather : 4 Seasons

Textile Short Jackets | Men



NF-2117



Sky-Blue

Red

Black



NF-2118



Neon-Orange

Grey

Neon-Green

- **Out Shell**
MaxDura 600-D & 1000-D / Dublan 2500-D
Heavy Fabric

- **Liner**
Water-Proof Membrane "with Sealing Tape"/
Air-Mesh "soft touch"

- **Lining**
Removable Thermal Quilt / Soft Shell Extra Panel /
Mobile & Stuff Pocket

- **Ventilation**
Air-vent "Water-Proof" Auto Lock Zips Front & Back

- **Protection**
EVO Protectors "CE Level-1 & 2 Approved" on the
Shoulder, Elbow & Back

- **High Visibility**
Reflector Heat Transfer Front & Back

- **Other Features**
Neoprene Collar & Cuff with Auto Lock Zip /
Adjustable Sleeve & Waist / TPR & Reflector Brands
Long & Short Connection Zipper for Trousers



Sizes Men : XS to 4XL
Women: XS to XL

Measurement Fit: Page 194

Color options : Page 193

Weather : 4 Seasons



>Dismantle Sleeve<



NF-2119



Red



Black



Neon-Orange



NF-2120



Grey



Red



Black

- **Out Shell**
MaxDura 300-D & 600-D / Air-Mesh / Dublan 2500-D
Heavy Fabric / Reflective Tape
- **Liner**
Air-Mesh "soft touch"
- **Lining**
Removable Water-Proof Membrane "with Sealing
Tape" / Thermal Quilt / Soft Shell Extra Panel /
Mobile & Stuff Pocket

- **Ventilation**
Air-vent "Water-Proof" Auto Lock Zips Front & Back
- **Protection**
EVO Protectors "CE Level-1 & 2 Approved" on the
Shoulder, Elbow & Back
- **High Visibility**
Reflector Heat Transfer Front & Back
- **Other Features**
Neoprene Collar & Cuff with Auto Lock Zip /
Adjustable Sleeve & Waist / TPR & Reflector Brands
Long & Short Connection Zipper for Trousers



Sizes Men : XS to 4XL
Women: XS to XL

Measurement Fit: Page 194

Color options : Page 193

Weather : 4 Seasons

Textile Short Jackets | Men



NF-2121



Black

Red

Neon-Green



NF-2122



Grey

Neon-Green

Black

- **Out Shell**
MaxDura 600-D & 1000-D / Dublan 2500-D
Heavy Fabric
- **Liner**
Water-Proof Membrane "with Sealing Tape" /
Air-Mesh "soft touch"
- **Lining**
Removable Thermal Quilt / Soft Shell Extra Panel /
Mobile & Stuff Pocket

- **Ventilation**
Air-vent "Water-Proof" Auto Lock Zips Front & Back
- **Protection**
EVO Protectors "CE Level-1 & 2 Approved" on the
Shoulder, Elbow & Back
- **High Visibility**
Reflector Heat Transfer Front & Back
- **Other Features**
Neoprene Collar & Cuff with Auto Lock Zip /
Adjustable Sleeve & Waist / TPR & Reflector Brands
Long & Short Connection Zipper for Trousers



Sizes Men : XS to 4XL
Women: XS to XL

Measurement Fit: Page 194

Color options : Page 193

Weather : 4 Seasons



NF-2200



Grey

Red

Sky-Blue



NF-2201



Black

Sky-Blue

Neon-Green

Red

- **Out Shell**
MaxDura 600-D & 1000-D Fabric / Soft-Shell
"Breathable" Fabric / Dublan 2500-D Heavy Fabric /
Reflector Heat Transfer Designs
- **Liner**
Water-Proof Membrane "with Sealing Tape"/
Air-Mesh "soft touch"
- **Lining**
Removable Thermal Quilt / Soft Shell Extra Panel /
Mobile & Stuff Pocket

- **Ventilation**
Air-vent "Water-Proof" Auto Lock Zips Front & Back
- **Protection**
EVO Protectors "CE Level-1 & 2 Approved" on the
Shoulder, Elbow & Back
- **High Visibility**
Reflector Heat Transfer Front & Back
- **Other Features**
Neoprene Collar & Cuff with Auto Lock Zip /
Adjustable Sleeve & Waist / TPR & Reflector Brands
Long & Short Connection Zipper for Trousers



Sizes Men : XS to 4XL
Women: XS to XL

Measurement Fit: Page 194

Color options : Page 193

Weather : 4 Seasons

Textile Long Jackets | Men



NF-2202



Grey

Red

Sky-Blue

Neon-Orange



NF-2203



Neon-Orange

Neon-Green

Black

Sky-Blue

- Out Shell

MaxDura 600-D & 1000-D Fabric / Dublan 2500-D Heavy Fabric / Reflector Heat Transfer Designs

- Liner

Water-Proof Membrane "with Sealing Tape" / Air-Mesh "soft touch"

- Lining

Removable Thermal Quilt / Soft Shell Extra Panel / Mobile & Stuff Pocket

- Ventilation

Air-vent "Water-Proof" Auto Lock Zips Front & Back

- Protection

EVO Protectors "CE Level-1 & 2 Approved" on the Shoulder, Elbow & Back

- High Visibility

Reflector Heat Transfer Front & Back

- Other Features

Neoprene Collar & Cuff with Auto Lock Zip / Adjustable Sleeve & Waist / TPR & Reflector Brands Long & Short Connection Zipper for Trousers



Sizes Men : XS to 4XL
Women: XS to XL

Measurement Fit: Page 194

Color options : Page 193

Weather : 4 Seasons



Grey

Neon-Green

Black

NF-2204



Grey

Red

White

NF-2205

- Out Shell**
 MaxDura 600-D & 1000-D Fabric / Sublimation Fabric / Dublin 2500-D Heavy Fabric / Reflector Heat Transfer Designs
- Liner**
 Water-Proof Membrane "with Sealing Tape" / Air-Mesh "soft touch"
- Lining**
 Removable Thermal Quilt / Soft Shell Extra Panel / Mobile & Stuff Pocket
- Ventilation**
 Air-vent "Water-Proof" Auto Lock Zips Front & Back
- Protection**
 EVO Protectors "CE Level-1 & 2 Approved" on the Shoulder, Elbow & Back
- High Visibility**
 Reflector Heat Transfer Front & Back
- Other Features**
 Neoprene Collar & Cuff with Auto Lock Zip / Adjustable Sleeve & Waist / TPR & Reflector Brands Long & Short Connection Zipper for Trousers



Sizes Men : XS to 4XL
 Women: XS to XL

Measurement Fit: Page 194

Color options : Page 193

Weather : 4 Seasons

Textile Long Jackets | Men



NF-2206



Grey

Neon-Green

Black



NF-2207



Grey

Neon-Green

Black

- **Out Shell**
MaxDura 600-D & 1000-D Fabric / Dublan 2500-D Heavy Fabric / Leather / Reflector Heat Transfer Designs
- **Liner**
Water-Proof Membrane "with Sealing Tape" / Air-Mesh "soft touch"
- **Lining**
Removable Thermal Quilt / Soft Shell Extra Panel / Mobile & Stuff Pocket

- **Ventilation**
Air-vent "Water-Proof" Auto Lock Zips Front & Back
- **Protection**
EVO Protectors "CE Level-1 & 2 Approved" on the Shoulder, Elbow & Back
- **High Visibility**
Reflector Heat Transfer Front & Back
- **Other Features**
Neoprene Collar & Cuff with Auto Lock Zip / Adjustable Sleeve & Waist / TPR & Reflector Brands Long & Short Connection Zipper for Trousers



Sizes Men : XS to 4XL
Women: XS to XL

Measurement Fit: Page 194

Color options : Page 193

Weather : 4 Seasons



NF-2208



Neon-Green

Red

Black



NF-2209



Grey

Neon-Green

Black

- **Out Shell**
MaxDura 600-D & 1000-D Fabric / Soft-Shell
"Breathable" Fabric / Dublan 2500-D Heavy Fabric /
Reflector Heat Transfer Designs
- **Liner**
Water-Proof Membrane "with Sealing Tape" /
Air-Mesh "soft touch"
- **Lining**
Removable Thermal Quilt / Soft Shell Extra Panel /
Mobile & Stuff Pocket

- **Ventilation**
Air-vent "Water-Proof" Auto Lock Zips Front & Back
- **Protection**
EVO Protectors "CE Level-1 & 2 Approved" on the
Shoulder, Elbow & Back
- **High Visibility**
Reflector Heat Transfer Front & Back
- **Other Features**
Neoprene Collar & Cuff with Auto Lock Zip /
Adjustable Sleeve & Waist / TPR & Reflector Brands
Long & Short Connection Zipper for Trousers



Sizes Men : XS to 4XL
Women: XS to XL

Measurement Fit: Page 194

Color options : Page 193

Weather : 4 Seasons



Neon-Orange

Black

Red

NF-2210



Removable Reflective Gallus



Grey

Red

Black

NF-2211

- **Out Shell**
MaxDura 600-D & 1000-D Fabric / Dublan 2500-D Heavy Fabric / Reflective Tape / Removable Reflective Gallus
- **Liner**
Water-Proof Membrane "with Sealing Tape" / Air-Mesh "soft touch"
- **Lining**
Removable Thermal Quilt / Soft Shell Extra Panel / Mobile & Stuff Pocket

- **Ventilation**
Air-vent "Water-Proof" Auto Lock Zips Front & Back
- **Protection**
EVO Protectors "CE Level-1 & 2 Approved" on the Shoulder, Elbow & Back
- **High Visibility**
Reflector Heat Transfar Front & Back
- **Other Features**
Neoprene Collar & Cuff with Auto Lock Zip / Adjustable Sleeve & Waist / TPR & Reflector Brands Long & Short Connection Zipper for Trousers



Sizes Men : XS to 4XL
Women: XS to XL

Measurement Fit: Page 194

Color options : Page 193

Weather : 4 Seasons



Removable Vest



With-out Vest



NF-2212



Grey



Red



Neon-Orange



NF-2213

Grey

Neon-Green

Black

- **Out Shell**
MaxDura 600-D & 1000-D Fabric / Dublan 2500-D Heavy Fabric / Reflector Heat Transfer Designs
- **Liner**
Water-Proof Membrane "with Sealing Tape" / Air-Mesh "soft touch"
- **Lining**
Removable Thermal Quilt / Soft Shell Extra Panel / Mobile & Stuff Pocket

- **Ventilation**
Air-vent "Water-Proof" Auto Lock Zips Front & Back
- **Protection**
EVO Protectors "CE Level-1 & 2 Approved" on the Shoulder, Elbow & Back
- **High Visibility**
Reflector Heat Transfer Front & Back
- **Other Features**
Neoprene Collar & Cuff with Auto Lock Zip / Adjustable Sleeve & Waist / TPR & Reflector Brands Long & Short Connection Zipper for Trousers



Sizes Men : XS to 4XL
Women: XS to XL

Measurement Fit: Page 194

Color options : Page 193

Weather : 4 Seasons



Red Neon-Green Black

NF-2214



Grey Neon-Green Black

NF-2215

- Out Shell**
 MaxDura 600-D & 1000-D Fabric / Dublan 2500-D Heavy Fabric
- Liner**
 Water-Proof Membrane "with Sealing Tape"/ Air-Mesh "soft touch"
- Lining**
 Removable Thermal Quilt / Soft Shell Extra Panel / Mobile & Stuff Pocket
- Ventilation**
 Air-vent "Water-Proof" Auto Lock Zips Front & Back
- Protection**
 EVO Protectors "CE Level-1 & 2 Approved" on the Shoulder, Elbow & Back
- High Visibility**
 Reflector Heat Transfar Front & Back
- Other Features**
 Neoprene Collar & Cuff with Auto Lock Zip / Adjustable Sleeve & Waist / TPR & Reflector Brands Long & Short Connection Zipper for Trousers



Sizes Men : XS to 4XL
 Women: XS to XL

Measurement Fit: Page 194

Color options : Page 193

Weather : 4 Seasons



NF-2216



Grey

Red

White



NF-2217



Grey

Red

Black

- **Out Shell**
MaxDura 600-D & 1000-D Fabric / Dublin 2500-D Heavy Fabric / Soft-Shell "Breathable" Fabric
- **Liner**
Water-Proof Membrane "with Sealing Tape" / Air-Mesh "soft touch"
- **Lining**
Removable Thermal Quilt / Soft Shell Extra Panel / Mobile & Stuff Pocket

- **Ventilation**
Air-vent "Water-Proof" Auto Lock Zips Front & Back
- **Protection**
EVO Protectors "CE Level-1 & 2 Approved" on the Shoulder, Elbow & Back
- **High Visibility**
Reflector Heat Transfer Front & Back
- **Other Features**
Neoprene Collar & Cuff with Auto Lock Zip / Adjustable Sleeve & Waist / TPR & Reflector Brands Long & Short Connection Zipper for Trousers



Sizes Men : XS to 4XL
Women: XS to XL

Measurement Fit: Page 194

Color options : Page 193

Weather : 4 Seasons

Textile Long Jackets | Men



NF-2218



Neon-Green

Blue

Sky-Blue



Hydro Bag Use



Hydro Bag



NF-2219



Red

Neon-Green

Sky-Blue

- **Out Shell**
MaxDura 600-D & 1000-D Fabric / Dublan 2500-D Heavy Fabric
- **Hydro Bag**
Removable Hydro Bag in Back Pocket
- **Liner**
Water-Proof Membrane "with Sealing Tape" / Air-Mesh "soft touch"
- **Lining**
Removable Thermal Quilt / Soft Shell Extra Panel / Mobile & Stuff Pocket

- **Ventilation**
Air-vent "Water-Proof" Auto Lock Zips Front & Back
- **Protection**
EVO Protectors "CE Level-1 & 2 Approved" on the Shoulder, Elbow & Back
- **High Visibility**
Reflector Heat Transfer Front & Back
- **Other Features**
Neoprene Collar & Cuff with Auto Lock Zip / Adjustable Sleeve & Waist / TPR & Reflector Brands Long & Short Connection Zipper for Trousers



Sizes Men : XS to 4XL
Women: XS to XL

Measurement Fit: Page 194

Color options : Page 193

Weather : 4 Seasons



NF-2300



Grey

Red

White



NF-2301



Grey

Neon-Green

Black

- Out Shell**
Air-Mesh / MaxDura 600-D / Leather / Dublan
2500-D Heavy Fabric / Sublimation Fabric
- Liner**
Air Mesh "soft touch"
- Lining**
Removable Water-Proof "Membrane" with Mesh
- Ventilation**
Air-Mesh
- Protection**
EVO Protectors **"CE Level-1 & 2 Approved"** on the
Shoulder, Elbow & Back
- High Visibility**
Reflector Piping
- Other Features**
Neoprene Collar & Cuff with Auto Lock Zip /
Adjustable Sleeve & Waist / TPR & Reflector Brands
Long & Short Connection Zipper for Trousers



Sizes Men : XS to 4XL
Women: XS to XL

Measurement Fit: Page 194

Color options : Page 193

Weather : 3 Seasons

Summer Textile Jackets | Men



NF-2302



Grey

Red

White



NF-2303



Grey

Red

Black

- **Out Shell**
Air-Mesh / MaxDura 600-D / Dublin 2500-D
Heavy Fabric / Sublimation Fabric

- **Liner**
Air Mesh "soft touch"

- **Lining**
Removable Water-Proof "Membrane" with Mesh

- **Ventilation**
Air-Mesh

- **Protection**
EVO Protectors "CE Level-1 & 2 Approved" on the
Shoulder, Elbow & Back

- **High Visibility**
Reflector Piping

- **Other Features**
Neoprene Collar & Cuff with Auto Lock Zip /
Adjustable Sleeve & Waist / TPR & Reflector Brands
Long & Short Connection Zipper for Trousers



Sizes Men : XS to 4XL
Women: XS to XL

Measurement Fit: Page 194

Color options : Page 193

Weather : 3 Seasons



NF-2304



Grey

Neon-Green

Red



NF-2305



Grey

Red

Black

■ **Out Shell**
Air-Mesh / MaxDura 600-D / Dublin 2500-D
Heavy Fabric

■ **Extra Protection**
Removable Chest Guard

■ **Liner**
Air Mesh "soft touch"

■ **Lining**
Removable Water-Proof "Membrane" with Mesh

■ **Ventilation**
Air-Mesh

■ **Protection**
EVO Protectors "CE Level-1 & 2 Approved" on the
Shoulder, Elbow & Back

■ **High Visibility**
Reflector Piping

■ **Other Features**
Neoprene Collar & Cuff with Auto Lock Zip /
Adjustable Sleeve & Waist / TPR & Reflector Brands
Long & Short Connection Zipper for Trousers



Sizes Men : XS to 4XL
Women: XS to XL

Measurement Fit: Page 194

Color options : Page 193

Weather : 3 Seasons

Summer Textile Jackets | Men



NF-2306



Red

Neon-Green

Neon-Orange



NF-2307



Grey

Red

Sky-Blue

■ **Out Shell**
Air-Mesh / MaxDura 600-D / Dublan 2500-D
Heavy Fabric

■ **Liner**
Air Mesh "soft touch"

■ **Lining**
Removable Water-Proof "Membrane" with Mesh

■ **Ventilation**
Air-Mesh

■ **Protection**
EVO Protectors "CE Level-1 & 2 Approved" on the
Shoulder, Elbow & Back

■ **High Visibility**
Reflector Piping

■ **Other Features**
Neoprene Collar & Cuff with Auto Lock Zip /
Adjustable Sleeve & Waist / TPR & Reflector Brands
Long & Short Connection Zipper for Trousers



Sizes Men : XS to 4XL
Women: XS to XL

Measurement Fit: Page 194

Color options : Page 193

Weather : 3 Seasons



NF-2308



Grey

Red

Black



NF-2309



Grey

Neon-Green

White

■ **Out Shell**
Air-Mesh / MaxDura 600-D / Dublin 2500-D
Heavy Fabric / Sublimation Fabric

■ **Liner**
Air Mesh "soft touch"

■ **Lining**
Removable Water-Proof "Membrane" with Mesh

■ **Ventilation**
Air-Mesh

■ **Protection**
EVO Protectors "CE Level-1 & 2 Approved" on the
Shoulder, Elbow & Back

■ **High Visibility**
Reflector Piping

■ **Other Features**
Neoprene Collar & Cuff with Auto Lock Zip /
Adjustable Sleeve & Waist / TPR & Reflector Brands
Long & Short Connection Zipper for Trousers



Sizes Men : XS to 4XL
Women: XS to XL

Measurement Fit: Page 194

Color options : Page 193

Weather : 3 Seasons

Summer Textile Jackets | Men



Grey

Red

Black

NF-2310



Grey

Red

Black

NF-2311

- **Out Shell**
MaxDura 300-D & 600-D / Soft-Shell "Breathable" /
Dublan 2500-D Heavy Fabric
- **Liner**
Water-Proof Membrane "with Sealing Tape" /
Air-Mesh "soft touch"
- **Lining**
Removable Thermal Quilt / Soft Shell Extra Panel /
Mobile & Stuff Pocket

- **Ventilation**
Air-vent "Water-Proof" Auto Lock Zips Front & Back
- **Protection**
EVO Protectors "CE Level-1 & 2 Approved" on the
Shoulder, Elbow & Back
- **High Visibility**
Reflector Heat Transfar Front & Back
- **Other Features**
Neoprene Collar & Cuff with Auto Lock Zip /
Adjustable Sleeve & Waist / TPR & Reflector Brands
Long & Short Connection Zipper for Trousers



Sizes: XS to XL

Measurement Fit: Page 194

Color options : Page 193

Weather : 4 Seasons



Grey

Neon-Green

Black

NF-2312



Neon-Green

Red

Blue

NF-2313

- Out Shell**
 MaxDura 300-D & 600-D / Dublan 2500-D
 Heavy Fabric / Sublimation Fabric
- Liner**
 Water-Proof Membrane "with Sealing Tape"/
 Air-Mesh "soft touch"
- Lining**
 Removable Thermal Quilt / Soft Shell Extra Panel /
 Mobile & Stuff Pocket
- Ventilation**
 Air-vent "Water-Proof" Auto Lock Zips Front & Back
- Protection**
 EVO Protectors "CE Level-1 & 2 Approved" on the
 Shoulder, Elbow & Back
- High Visibility**
 Reflector Piping
- Other Features**
 Neoprene Collar & Cuff with Auto Lock Zip /
 Adjustable Sleeve & Waist / TPR & Reflector Brands
 Long & Short Connection Zipper for Trousers



Sizes: XS to XL

Measurement Fit: Page 194

Color options : Page 193

Weather : 4 Seasons

CE Approved Jacket



NF-2400



Red

Neon-Green

White



- **Out Shell**
MaxDura 300-D & 600-D / Soft-Shell "Breathable" / Dublin 2500-D Heavy Fabric
- **CE Approved: YES**
EN13595-1
- **Liner**
Water-Proof Membrane "with Sealing Tape" / Air-Mesh "soft touch"
- **Lining**
Removable Thermal Quilt / Soft Shell Extra Panel / Mobile & Stuff Pocket

- **Ventilation**
Air-vent "Water-Proof" Auto Lock Zips Front & Back
- **Protection**
EVO Protectors "CE Level-1 & 2 Approved" on the Shoulder, Elbow & Back
- **High Visibility**
Reflector Heat Transfer Front & Back
- **Other Features**
Neoprene Collar & Cuff with Auto Lock Zip / Adjustable Sleeve & Waist / TPR & Reflector Brands Long & Short Connection Zipper for Trousers



Sizes: XS to XL

Measurement Fit: Page 194

Color options : Page 193

Weather : 4 Seasons



NF-2401



Pink

Black

Red



NF-2402



White

Red

Neon-Green

- **Out Shell**
MaxDura 300-D & 600-D / Soft-Shell "Breathable" /
Dublan 2500-D Heavy Fabric / Sublimation Fabric
- **Liner**
Water-Proof Membrane "with Sealing Tape" /
Air-Mesh "soft touch"
- **Lining**
Removable Thermal Quilt / Soft Shell Extra Panel /
Mobile & Stuff Pocket

- **Ventilation**
Air-vent "Water-Proof" Auto Lock Zips Front & Back
- **Protection**
EVO Protectors "CE Level-1 & 2 Approved" on the
Shoulder, Elbow & Back
- **High Visibility**
Reflector Heat Transfar Front & Back
- **Other Features**
Neoprene Collar & Cuff with Auto Lock Zip /
Adjustable Sleeve & Waist / TPR & Reflector Brands
Long & Short Connection Zipper for Trousers



Sizes: XS to XL

Measurement Fit: Page 194

Color options : Page 193

Weather : 4 Seasons



NF-2403



White

Pink

Neon-Green



NF-2404



Pink

Neon-Green

Red

- **Out Shell**
MaxDura 300-D & 600-D / Soft-Shell "Breathable" / Dublin 2500-D Heavy Fabric / Sublimation
- **Liner**
Water-Proof Membrane "with Sealing Tape" / Air-Mesh "soft touch"
- **Lining**
Removable Thermal Quilt / Soft Shell Extra Panel / Mobile & Stuff Pocket

- **Ventilation**
Air-vent "Water-Proof" Auto Lock Zips Front & Back
- **Protection**
EVO Protectors "CE Level-1 & 2 Approved" on the Shoulder, Elbow & Back
- **High Visibility**
Reflector Heat Transfer Front & Back
- **Other Features**
Neoprene Collar & Cuff with Auto Lock Zip / Adjustable Sleeve & Waist / TPR & Reflector Brands Long & Short Connection Zipper for Trouser



Sizes: XS to XL

Measurement Fit: Page 194

Color options : Page 193

Weather : 4 Seasons



NF-2405



White

Red

Neon-Green



NF-2406



Red

Neon-Green

Grey

- Out Shell**
 MaxDura 300-D & 600-D / Soft-Shell "Breathable" /
 Dublin 2500-D Heavy Fabric / Sublimation Fabric /
 Reflective Tape
- Liner**
 Water-Proof Membrane "with Sealing Tape" /
 Air-Mesh "soft touch"
- Lining**
 Removable Thermal Quilt / Soft Shell Extra Panel /
 Mobile & Stuff Pocket
- Ventilation**
 Air-vent "Water-Proof" Auto Lock Zips Front & Back
- Protection**
 EVO Protectors "CE Level-1 & 2 Approved" on the
 Shoulder, Elbow & Back
- High Visibility**
 Reflector Heat Transfar Front & Back
- Other Features**
 Neoprene Collar & Cuff with Auto Lock Zip /
 Adjustable Sleeve & Waist / TPR & Reflector Brands
 Long & Short Connection Zipper for Trousers



Sizes: XS to XL

Measurement Fit: Page 194

Color options : Page 193

Weather : 4 Seasons



NF-2407



White

Pink

Neon-Green



NF-2408



Black

Red

Neon-Green

■ **Out Shell**
MaxDura 300-D & 600-D / Soft-Shell "Breathable" /
Dublan 2500-D Heavy Fabric

■ **Liner**
Water-Proof Membrane "with Sealing Tape" /
Air-Mesh "soft touch"

■ **Lining**
Removable Thermal Quilt / Soft Shell Extra Panel /
Mobile & Stuff Pocket

■ **Ventilation**
Air-vent "Water-Proof" Auto Lock Zips Front & Back

■ **Protection**
EVO Protectors "CE Level-1 & 2 Approved" on the
Shoulder, Elbow & Back

■ **High Visibility**
Reflector Heat Transfar Front & Back

■ **Other Features**
Neoprene Collar & Cuff with Auto Lock Zip /
Adjustable Sleeve & Waist / TPR & Reflector Brands
Long & Short Connection Zipper for Trousers



Sizes: XS to XL

Measurement Fit: Page 194

Color options : Page 193

Weather : 4 Seasons



NF-2409



White

Red

Neon-Green



NF-2410



Neon-Green

Red

Grey

- **Out Shell**
MaxDura 300-D & 600-D / Soft-Shell "Breathable" /
Dublan 2500-D Heavy Fabric / Sublimation Fabric
- **Liner**
Water-Proof Membrane "with Sealing Tape" /
Air-Mesh "soft touch"
- **Lining**
Removable Thermal Quilt / Soft Shell Extra Panel /
Mobile & Stuff Pocket

- **Ventilation**
Air-vent "Water-Proof" Auto Lock Zips Front & Back
- **Protection**
EVO Protectors "CE Level-1 & 2 Approved" on the
Shoulder, Elbow & Back
- **High Visibility**
Reflector Heat Transfar Front & Back
- **Other Features**
Neoprene Collar & Cuff with Auto Lock Zip /
Adjustable Sleeve & Waist / TPR & Reflector Brands
Long & Short Connection Zipper for Trousers



Sizes: XS to XL

Measurement Fit: Page 194

Color options : Page 193

Weather : 4 Seasons



NF-2411



White

Neon-Green

Red



NF-2412



Neon-Green

Red

White

■ **Out Shell**
MaxDura 300-D & 600-D / Soft-Shell "Breathable" /
Dublan 2500-D Heavy Fabric / Sublimation Fabric

■ **Liner**
Water-Proof Membrane "with Sealing Tape" /
Air-Mesh "soft touch"

■ **Lining**
Removable Thermal Quilt / Soft Shell Extra Panel /
Mobile & Stuff Pocket

■ **Ventilation**
Air-vent "Water-Proof" Auto Lock Zips Front & Back

■ **Protection**
EVO Protectors "CE Level-1 & 2 Approved" on the
Shoulder, Elbow & Back

■ **High Visibility**
Reflector Heat Transfar Front & Back

■ **Other Features**
Neoprene Collar & Cuff with Auto Lock Zip /
Adjustable Sleeve & Waist / TPR & Reflector Brands
Long & Short Connection Zipper for Trousers



Sizes: XS to XL

Measurement Fit: Page 194

Color options : Page 193

Weather : 4 Seasons



NF-2413



White

Red

Sky-Blue



NF-2414



White

Red

Sky-Blue

- **Out Shell**
MaxDura 300-D & 600-D / Soft-Shell "Breathable" /
Dublan 2500-D Heavy Fabric / Sublimation Fabric
- **Liner**
Water-Proof Membrane "with Sealing Tape" /
Air-Mesh "soft touch"
- **Lining**
Removable Thermal Quilt / Soft Shell Extra Panel /
Mobile & Stuff Pocket

- **Ventilation**
Air-vent "Water-Proof" Auto Lock Zips Front & Back
- **Protection**
EVO Protectors "CE Level-1 & 2 Approved" on the
Shoulder, Elbow & Back
- **High Visibility**
Reflector Heat Transfar Front & Back
- **Other Features**
Neoprene Collar & Cuff with Auto Lock Zip /
Adjustable Sleeve & Waist / TPR & Reflector Brands
Long & Short Connection Zipper for Trousers



Sizes: XS to XL

Measurement Fit: Page 194

Color options : Page 193

Weather : 4 Seasons



NF-2415



Pink

Neon-Green

Red



NF-2416



White

Neon-Green

Purple

- **Out Shell**
MaxDura 300-D & 600-D / Soft-Shell **"Breathable"** /
Dublan 2500-D Heavy Fabric
- **Liner**
Water-Proof Membrane "with Sealing Tape" /
Air-Mesh "soft touch"
- **Lining**
Removable Thermal Quilt / Soft Shell Extra Panel /
Mobile & Stuff Pocket

- **Ventilation**
Air-vent "Water-Proof" Auto Lock Zips Front & Back
- **Protection**
EVO Protectors **"CE Level-1 & 2 Approved"** on the
Shoulder, Elbow & Back
- **High Visibility**
Reflector Heat Transfer Front & Back
- **Other Features**
Neoprene Collar & Cuff with Auto Lock Zip /
Adjustable Sleeve & Waist / TPR & Reflector Brands
Long & Short Connection Zipper for Trousers



Sizes: XS to XL

Measurement Fit: Page 194

Color options : Page 193

Weather : 4 Seasons



NF-2470



White

Red

Neon-Green



NF-2471



Black

Pink

White

■ **Out Shell**
Air-Mesh / MaxDura 600-D / Dublin 2500-D
Heavy Fabric

■ **Liner**
Air Mesh "soft touch"

■ **Lining**
Removable Water-Proof "Membrane" with Mesh

■ **Ventilation**
Air-Mesh

■ **Protection**
EVO Protectors "CE Level-1 & 2 Approved" on the
Shoulder, Elbow & Back

■ **High Visibility**
Reflector Piping

■ **Other Features**
Neoprene Collar & Cuff with Auto Lock Zip /
Adjustable Sleeve & Waist / TPR & Reflector Brands
Long & Short Connection Zipper for Trousers



Sizes: XS to XL

Measurement Fit: Page 194

Color options : Page 193

Weather : 3 Seasons

Summer Textile Jackets | Women



NF-2472



White

Red

Sky-Blue



NF-2473



Pink

White

Purple

- **Out Shell**
Air-Mesh / MaxDura 600-D / Dublin 2500-D
Heavy Fabric / Sublimation Fabric
- **Liner**
Air Mesh "soft touch"
- **Lining**
Removable Water-Proof "Membrane" with Mesh
- **Ventilation**
Air-Mesh
- **Protection**
EVO Protectors "CE Level-1 & 2 Approved" on the
Shoulder, Elbow & Back
- **High Visibility**
Reflector Piping
- **Other Features**
Neoprene Collar & Cuff with Auto Lock Zip /
Adjustable Sleeve & Waist / TPR & Reflector Brands
Long & Short Connection Zipper for Trouser



Sizes: XS to XL

Measurement Fit: Page 194

Color options : Page 193

Weather : 3 Seasons



NF-2474



White

Sky-Blue

Neon-Green



NF-2475



Pink

Sky-Blue

Neon-Green

■ **Out Shell**
Air-Mesh / MaxDura 600-D / Dublin 2500-D
Heavy Fabric / Sublimation Fabric

■ **Liner**
Air Mesh "soft touch"

■ **Lining**
Removable Water-Proof "Membrane" with Mesh

■ **Ventilation**
Air-Mesh

■ **Protection**
EVO Protectors "CE Level-1 & 2 Approved" on the
Shoulder, Elbow & Back

■ **High Visibility**
Reflector Piping

■ **Other Features**
Neoprene Collar & Cuff with Auto Lock Zip /
Adjustable Sleeve & Waist / TPR & Reflector Brands
Long & Short Connection Zipper for Trousers



Sizes: XS to XL

Measurement Fit: Page 194

Color options : Page 193

Weather : 3 Seasons



AIR-BAG TEXTILE JACKET

Fashion vs. Safety? No more! Both are now presented at the same time with a Single Product called Motorcycle Air-Bag Textile Jackets. The stylish Motorcycle Jacket along with the safest Airbag is specially designed for Motorcycle Riders that is already tested and adopted worldwide. This passive safety device, air bag consists of a tubular air-chamber fitted in an ordinary jacket. It is developed to achieve significantly faster inflation times, improve dressing comfort and easiness of use. The device focuses the most part of the volume disposed around the neck and along the limber spine as these are the principle body parts it's intended to protect. The CO₂ is stored in the cylinder at ambient temperature and very high pressure so it is at liquid state.

Air-Bag Textile Jacket



Air-Bag Textile Jackets | Men



Back Air-Bag



Front Air-Bag



Shock Buffering System Place



NF-2500



Neon-Orange



Black



Red



Grey



Air-Bag in Action

- **Out Shell**
MaxDura 600-D / Dublin 2500-D Heavy Duty Fabric
- **Air-Bag**
Air-Bag Kit (with CO-2 Cartridge) for Extreme Safety
- **Liner**
Air Mesh "soft touch"

- **Ventilation**
Air-vent "Water-Proof" Auto Lock Zips
- **Protection**
EVO Protectors "CE Level-1 & 2 Approved" on the Shoulder, Elbow & Back
- **High Visibility**
Reflector Front & Back
- **Other Features**
Neoprene Collar & Cuff with Auto Lock Zip / Adjustable Sleeve & Waist / TPR & Printed Brands Short Connection Zipper for Trousers



Sizes Men : XS to 4XL
Women: XS to XL

Measurement Fit: Page 194

Color options : Page 193

Weather : 4 Seasons



NF-2501



Air-Bag in Action

- Out Shell**
 MaxDura 600-D / Dublan 2500-D Heavy Duty Fabric / Sublimation Fabric
- Air-Bag**
 Air-Bag Kit (with CO-2 Cartridge) for Extreme Safety
- Liner**
 Air Mesh "soft touch"
- Ventilation**
 Air-vent "Water-Proof" Auto Lock Zips
- Protection**
 EVO Protectors "CE Level-1 & 2 Approved" on the Shoulder, Elbow & Back
- High Visibility**
 Reflector Front & Back
- Other Features**
 Neoprene Collar & Cuff with Auto Lock Zip / Adjustable Sleeve & Waist / TPR & Printed Brands Short Connection Zipper for Trousers



Sizes Men : XS to 4XL
 Women: XS to XL

Measurement Fit: Page 194

Color options : Page 193

Weather : 4 Seasons

Air-Bag Mesh Textile Jackets | Men



Air-Bag in Action

- **Out Shell**
Air-Mesh / MaxDura 600-D / Dublan 2500-D Heavy Duty Fabric
- **Air-Bag**
Air-Bag Kit (with CO-2 Cartridge) for Extreme Safety
- **Liner**
Air Mesh "soft touch"

- **Protection**
EVO Protectors "CE Level-1 & 2 Approved" on the Shoulder, Elbow & Back
- **High Visibility**
Reflector Front & Back
- **Other Features**
Neoprene Collar & Cuff with Auto Lock Zip / Adjustable Sleeve & Waist / TPR & Printed Brands / Short Connection Zipper for Trouser



Sizes Men : XS to 4XL
Women: XS to XL

Measurement Fit: Page 194

Color options : Page 193

Weather : 4 Seasons

Air-Bag Textile Vest | Men



Back Air-Bag



Front Air-Bag



Shock Buffering System Place



Neon-Orange



NF-2550



NF-2551



Neon-Orange



Air-Bag in Action

■ Out Shell
MaxDura 600-D / Reflective Tape

■ Air-Bag
Air-Bag Kit (with CO-2 Cartridge) for Extreme Safety

■ Liner
Air-Mesh "soft touch"

■ Protection
EVO Protectors "CE Level-2 Approved"
on the Back

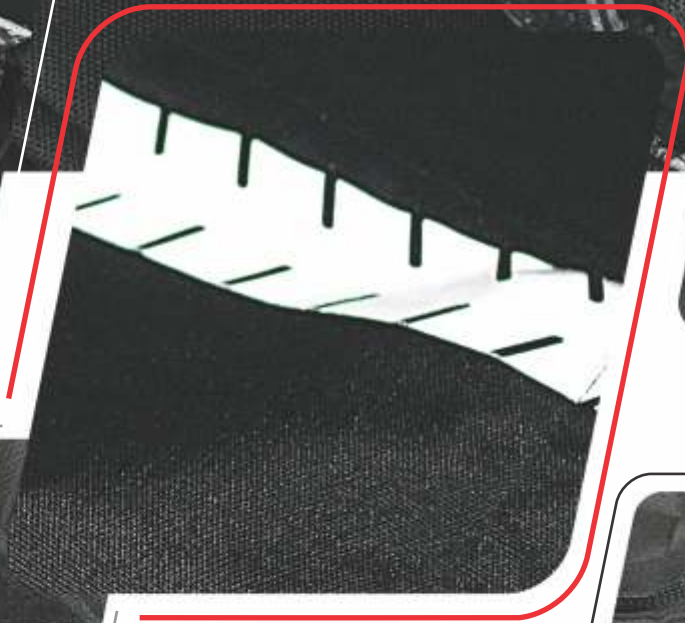
■ High Visibility
Reflector Front & Back

■ Other Features
Neoprene Collar / Adjustment Waist / TPR & Printed Brands



Sizes Men : XS to 4XL
Women: XS to XL

Color options : Page 193



TEXTILE TROUSER

Motorcycle Textile Trousers are light-weight & color-full protection gear for all kinds of riding. The trendiest safety garment. Light or medium weight textile trousers are contemplated in a range of designs and colors. The range of designs and colors is virtually inexhaustible and this range is made for your safety and aesthetics. Trousers are stitched with diverse adjustability and soothing panels. Summer trousers are also available with a range of designs, colors and sizes.

Customizing Textile Trouser





NF-2600



Red

Neon-Green

Grey



NF-2601



Grey

Neon-Green

Red

- Out Shell**
 MaxDura 600-D & 1000-D / Nylon 500-D / Dublan 2500-D Heavy Fabric / Cow Hide Leather / Reflector Heat Transfer Designs
- Liner**
 Water-Proof Membrane "with Sealing Tape"/ Air-Mesh "soft touch"
- Lining**
 Removable Thermal Quilt / Soft-Shell Extra Panel
- Ventilation**
 Air-vent "Water-Proof" Auto Lock Zips
- Protection**
 EVO Protectors "CE Level-1 & 2 Approved" on the Knee & Thigh
- High Visibility**
 Reflector Heat Transfar
- Other Features**
 Adjustable Waist / Stretchable Panels / TPR & Reflector Brands / Long & Short Connection Zipper for Jacket



Sizes Men : XS to 4XL
 Women: XS to XL

Measurement Fit: Page 195

Color options : Page 193

Weather : 4 Seasons

Textile Trousers | Men



NF-2602



Neon-Green

Red

Grey



Grey

Neon-Green

Red



NF-2603

- **Out Shell**
MaxDura 600-D & 1000-D / Nylon 500-D / Dublan 2500-D Heavy Fabric / Reflector Heat Transfer Designs Soft-Shell "Breathable" Fabric

- **Liner**
Water-Proof Membrane "with Sealing Tape"/ Air-Mesh "soft touch"

- **Lining**
Removable Thermal Quilt / Soft-Shell Extra Panel

- **Ventilation**
Air-vent "Water-Proof" Auto Lock Zips

- **Protection**
EVO Protectors "CE Level-1 & 2 Approved" on the Knee & Thigh

- **High Visibility**
Reflector Heat Transfar

- **Other Features**
Adjustable Waist / Stretchable Panels / TPR & Reflector Brands / Long & Short Connection Zipper for Jacket



Sizes Men : XS to 4XL
Women: XS to XL

Measurement Fit: Page 195

Color options : Page 193

Weather : 4 Seasons

Textile Trousers | Men



NF-2604



Black

Neon-Green

Sky-Blue



NF-2605



Neon-Green

Red

Grey

- Out Shell**
 MaxDura 600-D & 1000-D / Nylon 500-D / Dublan 2500-D Heavy Fabric / Reflector Heat Transfer Designs / Steel Mould on Knee
- Liner**
 Water-Proof Membrane "with Sealing Tape" / Air-Mesh "soft touch"
- Lining**
 Removable Thermal Quilt / Soft-Shell Extra Panel
- Ventilation**
 Air-vent "Water-Proof" Auto Lock Zips
- Protection**
 EVO Protectors "CE Level-1 & 2 Approved" on the Knee & Thigh
- High Visibility**
 Reflector Heat Transfar
- Other Features**
 Adjustable Waist / Stretchable Panels / TPR & Reflector Brands / Long & Short Connection Zipper for Jacket



Sizes Men : XS to 4XL
 Women: XS to XL

Measurement Fit: Page 195

Color options : Page 193

Weather : 4 Seasons

Textile Trousers | Men



NF-2606



Neon-Green



Red



Grey



Neon-Green



Red



Grey



NF-2607

- Out Shell**
 MaxDura 600-D & 1000-D / Nylon 500-D / Dublan 2500-D Heavy Fabric / Steel Mould on Knee
- Liner**
 Water-Proof Membrane "with Sealing Tape" / Air-Mesh "soft touch"
- Lining**
 Removable Thermal Quilt / Soft-Shell Extra Panel
- Ventilation**
 Air-vent "Water-Proof" Auto Lock Zips
- Protection**
 EVO Protectors "CE Level-1 & 2 Approved" on the Knee & Thigh
- High Visibility**
 Reflector Heat Transfar
- Other Features**
 Adjustable Waist / Stretchable Panels / TPR & Reflector Brands / Long & Short Connection Zipper for Jacket



Sizes Men : XS to 4XL
Women: XS to XL

Measurement Fit: Page 195

Color options : Page 193

Weather : 4 Seasons



NF-2608



Red Neon-Green Grey



NF-2609



Red Neon-Green Grey

- Out Shell**
 MaxDura 600-D & 1000-D / Nylon 500-D / Dublan 2500-D Heavy Fabric
- Liner**
 Water-Proof Membrane "with Sealing Tape"/ Air-Mesh "soft touch"
- Lining**
 Removable Thermal Quilt / Soft-Shell Extra Panel
- Ventilation**
 Air-vent "Water-Proof" Auto Lock Zips
- Protection**
 EVO Protectors "CE Level-1 & 2 Approved" on the Knee & Thigh
- High Visibility**
 Reflector Heat Transfar
- Other Features**
 Adjustable Waist / Stretchable Panels / TPR & Reflector Brands / Long & Short Connection Zipper for Jacket



Sizes Men : XS to 4XL
 Women: XS to XL

Measurement Fit: Page 195

Color options : Page 193

Weather : 4 Seasons

Textile Trousers | Men



NF-2610



Neon-Green

Red

Grey



Neon-Green

Red

Grey



NF-2611

- Out Shell**
 MaxDura 600-D & 1000-D / Nylon 500-D / Dublan 2500-D Heavy Fabric
- Liner**
 Water-Proof Membrane "with Sealing Tape" / Air-Mesh "soft touch"
- Lining**
 Removable Thermal Quilt / Soft-Shell Extra Panel
- Ventilation**
 Air-vent "Water-Proof" Auto Lock Zips
- Protection**
 EVO Protectors "CE Level-1 & 2 Approved" on the Knee & Thigh
- High Visibility**
 Reflector Heat Transfer
- Other Features**
 Adjustable Waist / Stretchable Panels / TPR & Reflector Brands / Long & Short Connection Zipper for Jacket



Sizes Men : XS to 4XL
 Women: XS to XL

Measurement Fit: Page 195

Color options : Page 193

Textile Trousers | Women



NF-2680



Sky-Blue



Pink



Neon-Green



NF-2681



White



Neon-Green



Black

- Out Shell**
 MaxDura 600-D & 1000-D / Nylon 500-D / Dublan 2500-D Heavy Fabric / Reflector Heat Transfer Designs
- Liner**
 Water-Proof Membrane "with Sealing Tape"/ Air-Mesh "soft touch"
- Lining**
 Removable Thermal Quilt / Soft-Shell Extra Panel
- Ventilation**
 Air-vent "Water-Proof" Auto Lock Zips
- Protection**
 EVO Protectors "CE Level-1 & 2 Approved" on the Knee & Thigh
- High Visibility**
 Reflector Heat Transfer
- Other Features**
 Adjustable Waist / Stretchable Panels / TPR & Reflector Brands / Long & Short Connection Zipper for Jacket



Sizes: XS to XL

Measurement Fit: Page 195

Color options : Page 193

Weather : 4 Seasons



NF-2682



Black



Pink



Neon-Green



Black



Pink



Neon-Green



NF-2683

- Out Shell**
 MaxDura 600-D & 1000-D / Nylon 500-D / Dublan 2500-D Heavy Fabric
- Liner**
 Water-Proof Membrane "with Sealing Tape" / Air-Mesh "soft touch"
- Lining**
 Removable Thermal Quilt / Soft-Shell Extra Panel
- Ventilation**
 Air-vent "Water-Proof" Auto Lock Zips
- Protection**
 EVO Protectors "CE Level-1 & 2 Approved" on the Knee & Thigh
- High Visibility**
 Reflector Heat Transfar
- Other Features**
 Adjustable Waist / Stretchable Panels / TPR & Reflector Brands / Long & Short Connection Zipper for Jacket

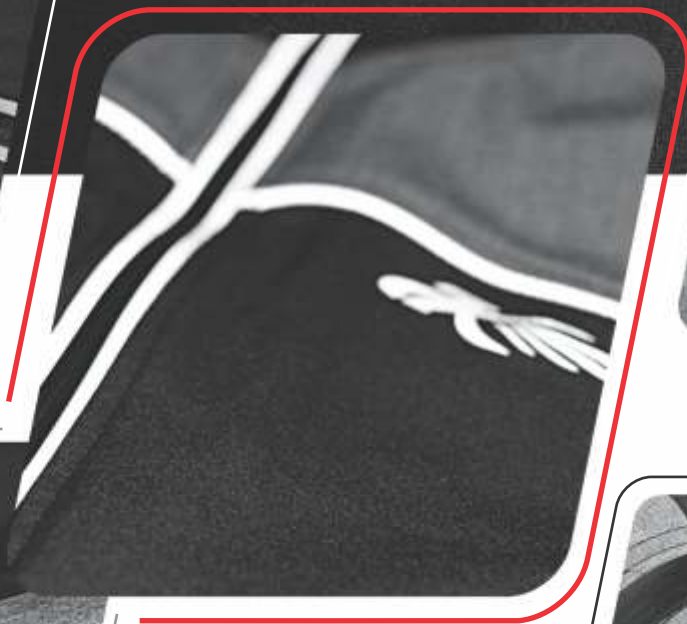


Sizes: XS to XL

Measurement Fit: Page 195

Color options : Page 193

Weather : 4 Seasons



SOFT-SHELL JACKET

Technical soft-shell high performance jackets are light-weight & color-full protection gear for all kinds of riding. The trendiest safety garment. Bonded breathable membrane, water-proof and wind-proof.

Customizing Soft-Shell Jacket





NF-2700



Blue



Red



Grey



NF-2701



Red



Neon-Green



Sky-Blue

■ **Out Shell**
Soft-Shell **"Breathable"** / MaxDura 600-D /
Heat Transfer Reflector / Sublimation Soft-Shell

■ **Liner**
Air Mesh "soft touch"

■ **Ventilation**
Air-vent "Water-Proof" Auto Lock Zips Front & Back

■ **Protection**
EVO Protectors **"CE Level- 1 & 2 Approved"** on the
Shoulder, Elbow & Back

■ **High Visibility**
Reflector Material

■ **Other Features**
Soft-Shell Collar & Cuff with Auto Lock Zip / Velcro Straps /
Adjustable Waist / Reflector Brands / Removable Hood



Sizes Men : XS to 4XL
Women: XS to XL

Measurement Fit: Page 194

Color options : Page 193

Weather : 4 Seasons



NF-2702



Red

Neon-Green

Sky-Blue



NF-2703



Grey

Red

Black

■ **Out Shell**
Soft-Shell **"Breathable"** / MaxDura 600-D /
Heat Transfer Reflector

■ **Liner**
Air Mesh "soft touch"

■ **Ventilation**
Air-vent "Water-Proof" Auto Lock Zips Front & Back

■ **Protection**
EVO Protectors **"CE Level- 1 & 2 Approved"** on the
Shoulder, Elbow & Back

■ **High Visibility**
Reflector Material

■ **Other Features**
Soft-Shell Collar & Cuff with Auto Lock Zip / Velcro Straps /
Adjustable Waist / Reflector Brands / Removable Hood



Sizes Men : XS to 4XL
Women: XS to XL

Measurement Fit: Page 194

Color options : Page 193

Weather : 4 Seasons



NF-2704



Neon-Green

Neon-Orange

Grey



NF-2705



Neon-Green

Sky-Blue

Grey

- **Out Shell**
Soft-Shell **"Breathable"** / MaxDura 600-D /
Heat Transfer Reflector / Sublimation Soft-Shell

- **Liner**
Air Mesh "soft touch"

- **Ventilation**
Air-vent "Water-Proof" Auto Lock Zips Front & Back

- **Protection**
EVO Protectors **"CE Level- 1 & 2 Approved"** on the
Shoulder, Elbow & Back

- **High Visibility**
Reflector Material

- **Other Features**
Soft-Shell Collar & Cuff with Auto Lock Zip / Velcro Straps /
Adjustable Waist / Reflector Brands / Removable Hood



Sizes Men : XS to 4XL
Women: XS to XL

Measurement Fit: Page 194

Color options : Page 193

Weather : 4 Seasons



NF-2706



Grey

Red

Black



NF-2707



Grey

Red

Neon-Green

■ **Out Shell**
Soft-Shell **"Breathable"** / MaxDura 600-D /
Sublimation / Heat Transfer Reflector

■ **Liner**
Air Mesh "soft touch"

■ **Ventilation**
Air-vent "Water-Proof" Auto Lock Zips Front & Back

■ **Protection**
EVO Protectors **"CE Level- 1 & 2 Approved"** on the
Shoulder, Elbow & Back

■ **High Visibility**
Reflector Material

■ **Other Features**
Soft-Shell Collar & Cuff with Auto Lock Zip / Velcro Straps /
Adjustable Waist / Reflector Brands / Removable Hood



Sizes Men : XS to 4XL
Women: XS to XL

Measurement Fit: Page 194

Color options : Page 193

Weather : 4 Seasons



NF-2708



Grey

Red

White



NF-2709



Red

Neon-Green

Black

■ **Out Shell**
Soft-Shell **"Breathable"** / MaxDura 600-D / Reflector Sublimation

■ **Liner**
Air Mesh "soft touch"

■ **Ventilation**
Air-vent "Water-Proof" Auto Lock Zips Front & Back

■ **Protection**
EVO Protectors **"CE Level- 1 & 2 Approved"** on the Shoulder, Elbow & Back

■ **High Visibility**
Reflector Material

■ **Other Features**
Soft-Shell Collar & Cuff with Auto Lock Zip / Velcro Straps / Adjustable Waist / Reflector Brands / Removable Hood



Sizes Men : XS to 4XL
Women: XS to XL

Measurement Fit: Page 194

Color options : Page 193

Weather : 4 Seasons



NF-2710



Grey



Red



White



NF-2711



Neon-Green



Red



Blue

■ **Out Shell**
Soft-Shell **"Breathable"** / MaxDura 600-D /
Sublimation Fabric

■ **Liner**
Air Mesh "soft touch"

■ **Ventilation**
Air-vent "Water-Proof" Auto Lock Zips Front & Back

■ **Protection**
EVO Protectors **"CE Level-1 & 2 Approved"** on the
Shoulder, Elbow & Back

■ **High Visibility**
Reflector Material

■ **Other Features**
Soft-Shell Collar & Cuff with Auto Lock Zip / Velcro
Straps / Adjustable Waist / Reflector & Steel Brands



Sizes Men : XS to 4XL
Women: XS to XL

Measurement Fit: Page 194

Color options : Page 193

Weather : 4 Seasons



NF-2712



Grey

Neon-Green

Red



NF-2713



Grey

Neon-Green

Red

■ **Out Shell**
Soft-Shell **"Breathable"** / MaxDura 600-D / Sublimation

■ **Liner**
Air Mesh "soft touch"

■ **Ventilation**
Air-vent "Water-Proof" Auto Lock Zips Front & Back

■ **Protection**
EVO Protectors **"CE Level-1 & 2 Approved"** on the Shoulder, Elbow & Back

■ **High Visibility**
Reflector Material

■ **Other Features**
Soft-Shell Collar & Cuff with Auto Lock Zip / Velcro Straps / Adjustable Waist / Reflector & Steel Brands



Sizes Men : XS to 4XL
Women: XS to XL

Measurement Fit: Page 194

Color options : Page 193

Weather : 4 Seasons



NF-2714



Neon-Green



Red



Black



NF-2715



Grey



Blue



Red

■ Out Shell
Soft-Shell **"Breathable"** / MaxDura 600-D

■ Liner
Air Mesh "soft touch"

■ Ventilation
Air-vent "Water-Proof" Auto Lock Zips Front & Back

■ Protection
EVO Protectors **"CE Level-1 & 2 Approved"** on the Shoulder, Elbow & Back

■ High Visibility
Reflector Material

■ Other Features
Soft-Shell Collar & Cuff with Auto Lock Zip / Velcro Straps / Adjustable Waist / Reflector & Steel Brands



Sizes Men : XS to 4XL
Women: XS to XL

Measurement Fit: Page 194

Color options : Page 193

Weather : 4 Seasons



NF-2716



Blue

Red

Black



NF-2717



Blue

Red

Grey

■ **Out Shell**
Soft-Shell **"Breathable"** / MaxDura 600-D / Cow
Hide Leather / Fourway Rib

■ **Liner**
Air Mesh "soft touch"

■ **Ventilation**
Air-vent "Water-Proof" Auto Lock Zips Front & Back

■ **Protection**
EVO Protectors **"CE Level-1 & 2 Approved"** on the
Shoulder, Elbow & Back

■ **High Visibility**
Reflector Material

■ **Other Features**
Soft-Shell Collar & Cuff with Auto Lock Zip / Velcro
Straps / Adjustable Waist / Reflector & Steel Brands



Sizes Men : XS to 4XL
Women: XS to XL

Measurement Fit: Page 194

Color options : Page 193

Weather : 4 Seasons



Neon-Green

Red

Black

NF-2718



Red

Neon-Green

Black

NF-2719

■ **Out Shell**
Soft-Shell **"Breathable"** / MaxDura 600-D
Cow Leather / Four-way Rib

■ **Liner**
Air Mesh "soft touch"

■ **Ventilation**
Air-vent "Water-Proof" Auto Lock Zips Front & Back

■ **Protection**
EVO Protectors **"CE Level-1 & 2 Approved"** on the
Shoulder, Elbow & Back

■ **High Visibility**
Reflector Material

■ **Other Features**
Soft-Shell Collar & Cuff with Auto Lock Zip / Velcro
Straps / Adjustable Waist / Reflector & Steel Brands



Sizes Men : XS to 4XL
Women: XS to XL

Measurement Fit: Page 194

Color options : Page 193

Weather : 4 Seasons



Black

NF-2720



Grey

Blue

Red

NF-2721

- **Out Shell**
Soft-Shell **"Breathable"** / MaxDura 600-D
- **Liner**
Air Mesh "soft touch"
- **Ventilation**
Air-vent "Water-Proof" Auto Lock Zips Front & Back
- **Protection**
EVO Protectors **"CE Level-1 & 2 Approved"** on the Shoulder, Elbow & Back
- **High Visibility**
Reflector Material
- **Other Features**
Soft-Shell Collar & Cuff with Auto Lock Zip / Velcro Straps / Adjustable Waist / Reflector & Steel Brands



Sizes Men : XS to 4XL
Women: XS to XL

Measurement Fit: Page 194

Color options : Page 193

Weather : 4 Seasons



NF-2770



Black

Sky-Blue

Red



NF-2771



Sky-Blue

Red

Grey

■ **Out Shell**
Soft-Shell **"Breathable"** / MaxDura 600-D /
Heat Transfer Reflector / Sublimation Soft-Shell

■ **Liner**
Air Mesh "soft touch"

■ **Ventilation**
Air-vent "Water-Proof" Auto Lock Zips Front & Back

■ **Protection**
EVO Protectors **"CE Level-1 & 2 Approved"** on the
Shoulder, Elbow & Back

■ **High Visibility**
Reflector Material

■ **Other Features**
Soft-Shell Collar & Cuff with Auto Lock Zip / Velcro Straps /
Adjustable Waist / Reflector Brands / Removable Hood



Sizes: XS to XL

Measurement Fit: Page 194

Color options : Page 193

Weather : 4 Seasons



NF-2772



Sky-Blue Neon-Green Red



NF-2773



Grey Red Sky-Blue

■ Out Shell
Soft-Shell **"Breathable"** / MaxDura 600-D /
Heat Transfer Reflector / Sublimation Soft-Shell

■ Liner
Air Mesh "soft touch"

■ Ventilation
Air-vent "Water-Proof" Auto Lock Zips Front & Back

■ Protection
EVO Protectors **"CE Level-1 & 2 Approved"** on the
Shoulder, Elbow & Back

■ High Visibility
Reflector Material

■ Other Features
Soft-Shell Collar & Cuff with Auto Lock Zip / Velcro Straps /
Adjustable Waist / Reflector Brands / Removable Hood



Sizes: XS to XL

Measurement Fit: Page 194

Color options : Page 193

Weather : 4 Seasons



NF-2774



Pink

Neon-Green

Red



NF-2775



Neon-Green

Red

Grey

■ **Out Shell**
Soft-Shell **"Breathable"** / MaxDura 600-D /
Heat Transfer Reflector / Sublimation Soft-Shell

■ **Liner**
Air Mesh "soft touch"

■ **Ventilation**
Air-vent "Water-Proof" Auto Lock Zips Front & Back

■ **Protection**
EVO Protectors **"CE Level-1 & 2 Approved"** on the
Shoulder, Elbow & Back

■ **High Visibility**
Reflector Material

■ **Other Features**
Soft-Shell Collar & Cuff with Auto Lock Zip / Velcro Straps /
Adjustable Waist / Reflector Brands / Removable Hood



Sizes: XS to XL

Measurement Fit: Page 194

Color options : Page 193

Weather : 4 Seasons



NF-2776

Neon-Green

Red

Grey



NF-2777

Red

- **Out Shell**
Soft-Shell **"Breathable"** / MaxDura 600-D / Heat Transfer Reflector / Sublimation Soft-Shell Taslan Nylon 330-T / with Quilt
- **Liner**
Air Mesh "soft touch"

- **Ventilation**
Air-vent "Water-Proof" Auto Lock Zips Front & Back
- **Protection**
EVO Protectors **"CE Level-1 & 2 Approved"** on the Shoulder, Elbow & Back
- **High Visibility**
Reflector Material
- **Other Features**
Soft-Shell Collar & Cuff with Auto Lock Zip / Velcro Straps / Adjustable Waist / Reflector Brands / Removable Hood



Sizes: XS to XL

Measurement Fit: Page 194

Color options : Page 193

Weather : 4 Seasons



NF-2800



White

Neon-Green

Grey



Red

Neon-Green

Black



NF-2801

■ Out Shell
Soft-Shell **"Breathable"** / MaxDura 600-D

■ Liner
Air-Mesh "soft touch"

■ Ventilation
Air-vent "Water-Proof" Auto Lock Zips

■ Protection
EVO Protectors **"CE Level-1 & 2 Approved"** on the Knee & Thigh

■ High Visibility
Reflector Material

■ Other Features
Adjustable Waist / Stretchable Panels / Reflector Brands



Sizes Men : XS to 4XL
Women: XS to XL

Measurement Fit: Page 195

Color options : Page 193

Weather : 4 Seasons

Soft-Shell Textile Trousers | Women



NF-2870



White Neon-Green Red



NF-2871



Red Grey Black

- Out Shell**
 Soft-Shell **"Breathable"** / MaxDura 600-D
- Liner**
 Air-Mesh "soft touch"
- Ventilation**
 Air-vent "Water-Proof" Auto Lock Zips
- Protection**
 EVO Protectors **"CE Level-1 & 2 Approved"** on the Knee & Thigh
- High Visibility**
 Reflector Material
- Other Features**
 Adjustable Waist / Stretchable Panels / Reflector Brands



Sizes: XS to XL
 Measurement Fit: Page 195
 Color options : Page 193
 Weather : 4 Seasons



KEVLAR® DENIM JACKET & TROUSER

Range of finishes, Denim with KEVLAR®, Genuine Woven KEVLAR® across the shoulders, elbow, thigh, knees and seat.
Casual with high level of safety.



NF-2900

Kevlar Position Views



Kevlar on Back



Kevlar on Shoulder & Elbow



NF-2901

- Out Shell

Denim with Kevlar Fabric / Reflector
- Liner

Air-Mesh "soft touch"
- Kevlar

Kevlar Fabric In-side used
- Ventilation

Air-vent "Water-Proof" Auto Lock Zips Front & Back
- Protection

EVO Protectors "CE Level-1 & 2 Approved" on the Shoulder, Elbow & Back
- High Visibility

Reflector Material
- Other Features

Adjustable Waist / Stretchable Panels / Embroidery Brands



Sizes Men : XS to 4XL
 Women: XS to XL

Measurement Fit: Page 194

Weather : 4 Seasons

Kevlar Denim Trousers | Men

Kevlar Position Views



Kevlar on Back



Kevlar on Front & Side



NF-2930



NF-2931

■ Out Shell
Denim with Kevlar Fabric / Reflector

■ Liner
Air-Mesh "soft touch"

■ Kevlar
Kevlar Fabric In-side used

■ Ventilation
Air-vent "Water-Proof" Auto Lock Zips

■ Protection
EVO Protectors "CE Level- 1 & 2 Approved" on the Knee & Thigh

■ High Visibility
Reflector Material

■ Other Features
Adjustable Waist / Stretchable Panels / Embroidery Brands



Sizes Men : XS to 4XL
Women: XS to XL

Measurement Fit: Page 195

Weather : 4 Seasons



NF-2980

Kevlar Position Views



Kevlar on Back



Kevlar on Shoulder & Elbow

Kevlar Position Views



Kevlar on Back



Kevlar on Front & Side



NF-2990

- Out Shell
Denim with Kevlar Fabric / Reflector
- Liner
Air-Mesh "soft touch"
- Kevlar
Kevlar Fabric In-side used
- Ventilation
Air-vent "Water-Proof" Auto Lock Zips Front & Back
- Protection
EVO Protectors "CE Level-1 & 2 Approved" on the Shoulder, Elbow & Back / Thigh & Knee
- High Visibility
Reflector Material
- Other Features
Adjustable Waist / Stretchable Panels / Embroidery Brands



Sizes: XS to XL
Measurement Fit: Page 194 & 195
Weather : 4 Seasons

Rain Wears



Neon-Orange



Black



Red



Grey



NF-3000



NF-3001



Grey



Red



Black



Neon-Orange

■ **Out Shell**
Rip-Stop 210-T Fabric / MaxDura 600-D / Reflector

■ **Water & Wind-Proof:** YES

■ **Liner**
Air-Mesh "soft touch"

■ **Ventilation**
Air-vent "Water-Proof" Auto Lock Zips Front & Back

■ **Protection**
EVO Protectors "CE Level-1 & 2 Approved" on the Shoulder, Elbow & Back / Knee & Thigh

■ **High Visibility**
Reflector Material

■ **Other Features**
Neoprene Collar / Velcro Straps / Adjustable Waist / Reflector Brands / Removable Hood



Sizes Men : XS to 4XL
Women: XS to XL

Color options : Page 193

Weather : All Seasons



Neon-Green



Black



Red



Neon-Orange

NF-3002



NF-3003



Grey



Red



Black



Neon-Orange

- **Out Shell**
Rip-Stop 210-T / Taffeta 190-T Coated Fabric with MaxDura 600-D / Reflector
- **Water & Wind-Proof:** YES
- **Liner**
Air-Mesh "soft touch"

- **Ventilation**
Air-vent "Water-Proof" Auto Lock Zips Front & Back
- **High Visibility**
Reflector Material
- **Other Features**
Neoprene Collar / Velcro Straps / Adjustable Waist / Reflector Brands / Removable Hood



Sizes Men : XS to 4XL
Women: XS to XL
Color options : Page 193
Weather : All Seasons

Rain Wears



NF-3004



Red



Neon-Orange



Red



Grey



NF-3005



Grey



Neon-Orange



Red



Neon-Green

■ **Out Shell**
Taffeta 190-T Coated Fabric with MaxDura
600-D / Reflector

■ **Water & Wind-Proof:** YES

■ **Liner**
Air-Mesh "soft touch"

■ **Ventilation**
Air-vent "Water-Proof" Auto Lock Zips Front & Back

■ **High Visibility**
Reflector Material

■ **Other Features**
Neoprene Collar / Velcro Straps / Adjustable Waist /
Reflector Brands / Removable Hood



Sizes Men : XS to 4XL
Women: XS to XL

Color options : Page 193

Weather : All Seasons



Red

Neon-Orange

Grey



NF-3050

- Out Shell**
 Transparent PVC / Taffeta 190-T Coated Fabric with MaxDura 600-D / Reflector
- Water & Wind-Proof:** YES
- Liner**
 Air-Mesh "soft touch"
- Ventilation**
 Air-vent "Water-Proof" Auto Lock Zips Front & Back
- High Visibility**
 Reflector Material
- Other Features**
 Neoprene Collar / Velcro Straps / Adjustable Waist / Reflector Brands / Removable Hood



Sizes Men : XS to 4XL
 Women: XS to XL

Color options : Page 193

Weather : All Seasons



NF-3070



Sky-Blue



Pink



Grey



Red



NF-3071



Grey

Sky-Blue

Red

Neon-Green

- **Out Shell**
Rip-Stop 210-T / Taffeta 190-T Coated Fabric with MaxDura 600-D / Reflector
- **Water & Wind-Proof:** YES
- **Liner**
Air-Mesh "soft touch"

- **Ventilation**
Air-vent "Water-Proof" Auto Lock Zips Front & Back
- **Protection**
EVO Protectors "CE Level-1 & 2 Approved" on the Shoulder, Elbow & Back / Knee & Thigh
- **High Visibility**
Reflector Material
- **Other Features**
Neoprene Collar / Velcro Straps / Adjustable Waist / Reflector Brands / Removable Hood



Sizes: XS to XL

Color options : Page 193

Weather : All Seasons

Safety Textile Vests



Neon-Orange



NF-3100



NF-3101



Neon-Orange

■ Out Shell
MaxDura 600-D / Reflector Material

■ Liner
Air-Mesh "soft touch"

■ High Visibility
Reflector Material

■ Other Features
Neoprene Collar / Reflector Brands



Sizes Men : XS to 4XL
Women: XS to XL

Fleece Hoodies



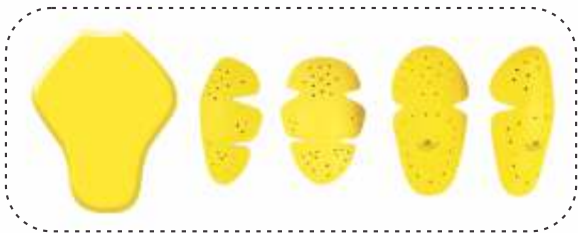
Neon-Green

Red

Neon-Yellow

Grey

NF-3150



Grey

Sky-Blue

Red

Neon-Green



NF-3151

■ **Out Shell**
Fleece Fabric "Soft Touch"
Sublimation / Four-way Rib

■ **Liner**
Air Mesh "soft touch"

■ **Protection**
EVO Protectors "CE Level-1 & 2 Approved" on the
Shoulder, Elbow & Back

■ **High Visibility**
Reflector Material



Sizes Men : XS to 4XL
Women: XS to XL

Measurement Fit: Page 194

Color options : Page 193

Weather : 4 Seasons

Fleece Hoodies



Neon-Green

Maroon

Green

Black

White



Neon-Orange

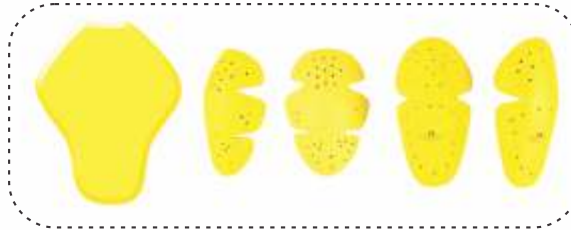
Purple

Yellow

Red

Navy-Blue

NF-3152



White

Neon-Green

Maroon

Red

Sky-Blue



NF-3153

■ Out Shell
Fleece Fabric "Soft Touch" / Four-way Rib
Printed Branding Logo

■ Liner
Air Mesh "soft touch"

■ Protection
EVO Protectors "CE Level-1 & 2 Approved" on the
Shoulder, Elbow & Back

■ High Visibility
Reflector Material



Sizes Men : XS to 4XL
Women: XS to XL

Measurement Fit: Page 194

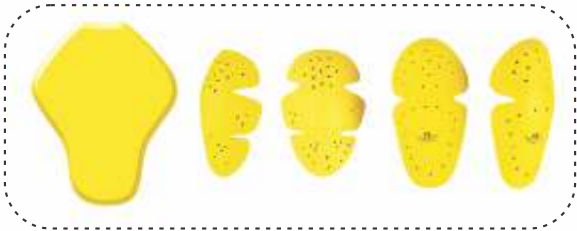
Color options : Page 193

Weather : 4 Seasons

Fleece Hoodies & T-shirt



White Blue Yellow Navy-Blue Neon-Orange



NF-3154



NF-3160



Neon-Green Purple Sky-Blue Green Black

■ **Out Shell**
Fleece Fabric "Soft Touch" / Four-way Rib
100% Cotton
Printed Branding Logo

■ **Liner**
Air Mesh "soft touch"

■ **Protection**
EVO Protectors "CE Level-1 & 2 Approved" on the
Shoulder, Elbow & Back

■ **High Visibility**
Reflector Material



Sizes Men : XS to 4XL
Women: XS to XL

Measurement Fit: Page 194

Color options : Page 193

Weather : 4 Seasons



PROTECTOR AROMERS

Studies state that fear is important for living. But there are categories of people who fight to remove fears and people who want to taste more fear. An adventurous urge, an acrobatic riding leads towards dangerous acts which may lose balance and harm body parts.

Customizing Protector Armors

CE Approved
by RICOTEST (Italy)



Protector Armors



NF-3500



White

Neon-Green

Orange



NF-3501



Neon-Green

Red

Sky-Blue

- Out Shell
Ploy Air-Mesh / MaxDura 600-D Sublimation / Lycra / Plastic Mould Protector

- CE Approved: **YES**
(EN 1621-1 / EN 1621-2 / EN 14021)
By Ricotest (Italy)



- Ventilation
Air-Mesh
- Protection
Plastic Protectors "CE Level-1 & 2 Approved" on the Chest, Shoulder, Elbow & Back
- Other Features
Adjustable Waist with Velcro Straps / TPR & Printed Brands



Sizes Men : XS to 4XL
Kids : 8 to 14

Color options : Page 193

Protector Armors



NF-3502



Black

Red

Grey



NF-3503



White

Red

Grey

- Out Shell
Play Air-Mesh / MaxDura 600-D Sublimation / Lycra / Plastic Mould Protector
- CE Approved: **YES**
(EN 1621-1 / EN 1621-2 / EN 14021)
By Ricotest (Italy)

- Ventilation
Air-Mesh
- Protection
Plastic Protectors "CE Level-1 & 2 Approved" on the Chest, Shoulder, Elbow & Back
- Other Features
Adjustable Waist with Velcro Straps / TPR & Printed Brands



Sizes Men : XS to 4XL
Kids : 8 to 14

Color options : Page 193

Protector Armors



NF-3504



White

Neon-Green

Sky-Blue



NF-3505



Black

Red

Grey

■ Out Shell
Ploy Air-Mesh / MaxDura 600-D Sublimation /
Lycra / Plastic Mould Protector

■ CE Approved: **YES**
(EN 1621-1 / EN 1621-2 / EN 14021)
By Ricotest (Italy)



■ Ventilation
Air-Mesh

■ Protection
Plastic Protectors "CE Level-1 & 2 Approved" on the
Chest, Shoulder, Elbow & Back

■ Other Features
Adjustable Waist with Velcro Straps / TPR & Printed Brands



Sizes Men : XS to 4XL
Kids : 8 to 14

Color options : Page 193

Protector Armors



NF-3506



Neon-Green

White

Red



NF-3507



White

Red

Grey

- Out Shell
Play Air-Mesh / MaxDura 600-D Sublimation / Lycra / Plastic Mould Protector
- CE Approved: **YES**
(EN 1621-1 / EN 1621-2 / EN 14021)
By Ricotest (Italy)



- Ventilation
Air-Mesh
- Protection
Plastic Protectors "CE Level-1 & 2 Approved" on the Chest, Shoulder, Elbow & Back
- Other Features
Adjustable Waist with Velcro Straps / TPR & Printed Brands



Sizes Men : XS to 4XL
Kids : 8 to 14

Color options : Page 193

Protector Armors



NF-3508



White Red Grey



NF-3509



Neon-Green Red Grey

- Out Shell
Ploy Air-Mesh / MaxDura 600-D Sublimation / Lycra / Plastic Mould Protector
- CE Approved: **YES**
(EN 1621-1 / EN 1621-2 / EN 14021)
By Ricotest (Italy)

- Ventilation
Air-Mesh
- Protection
Plastic Protectors "CE Level-1 & 2 Approved" on the Chest, Shoulder, Elbow & Back
- Other Features
Adjustable Waist with Velcro Straps / TPR & Printed Brands



Sizes Men : XS to 4XL
Kids : 8 to 14

Color options : Page 178



KIDS Fit



NF-3525



Grey Neon-Green Neon-Orange



Grey Four-Green Sky-Blue

NF-3526



NF-3527



Grey Yellow Red

- Out Shell
Ploy Air-Mesh / MaxDura 600-D Sublimation / Lycra / Plastic Mould Protector
- CE Approved: **YES**
(EN 1621-1 / EN 1621-2 / EN 14021)
By Ricotest (Italy)

- Ventilation
Air-Mesh
- Protection
Plastic Protectors "CE Level-1 & 2 Approved" on the Chest, Shoulder, Elbow & Back
- Other Features
Adjustable Waist with Velcro Straps / TPR & Printed Brands



Sizes : 8 to 14
Color options : Page 193

Protector Vests & Back Protectors



NF-3530



Black



Neon-Green



Grey



NF-3540



Red



White



Green



Black

■ Out Shell
Ploy Air-Mesh / MaxDura 600-D Sublimation / Lycra
Plastic & Rubber Mould Protector

■ CE Approved: **YES**
(EN 1621-1 / EN 1621-2 / EN 14021)
By Ricotest (Italy)

■ Other Features
Adjustable Waist with Velcro Straps /
TPR & Printed Brands



Sizes Men : XS to 4XL
Kids : 8 to 14

Color options : Page 193

Protector Shorts



NF-3550



Neon-Green Red White Grey



Grey White Neon-Orange Neon-Green



NF-3551

■ Out Shell
Ploy Air-Mesh / MaxDura 600-D Sublimation /
Lykra / Plastic Mould Protector

■ Ventilation
Air-Mesh

■ Protection
Plastic Protectors with EVO Padding

■ Other Features
Adjustable Waist / Grip



Sizes Men : 28 to 40
 Kids : 8 to 16

Color options : Page 193

Protector Back



NF-3560



NF-3561



NF-3562

Shin Guard



NF-3580



NF-3581



NF-3582

Shin Guard



NF-3583

Shin Guard

Elbow Guard



NF-3584

Elbow Guard



NF-3585

Elbow Guard

■ Out Shell
Neoprene / MaxDura 600-D Sublimation /
Plastic Printed Mould Protector

■ Other Features
Adjustable Waist with Velcro Straps /
TPR & Printed Brands

Sizes Men : XS to 4XL
Kids : 8 to 14

Color options : Page 193

Kidney Belts



NF-3600



Neon-Green



Grey



White



NF-3601



Grey



Neon-Green



Blue



NF-3602



Black



Neon-Green



Blue



NF-3603



Grey



Red



Neon-Green

- Out Shell
Inject Rubber & Neoprene Mould with EVO Padding / Air-Mesh / MaxDura 600-D / Sublimation Fabric

- Liner
Air-Mesh with Foam Padding

- Protection
Inject Rubber & Neoprene Mould

- High Visibility
Reflector Piping

- Other Features
Adjustable Velcro Straps



Sizes Men : XS to 4XL
Women: XS to XL

Color options : Page 193



LEATHER / TEXTILE GLOVES

Hands may not be that much active but controlling the ride and it's an important and vital part of body. "A range of leather and textile, winter and summer gloves are designed as complete package of riding gears, they reduce friction, reduce vibrations which might cause numbness, reduce pressure on ulnar nerve. These gloves are designed to have extra padding at the palms, wrist, and minor joints of phalanges to protect from injury, nerve pressure, and friction, climatic effects like cold and sweating".

Customizing Leather / Textile Glove





Black Red Grey

NF-4000



Grey Red Black



NF-4001

- **Out Shell**
Cow-Hide "Aniline" Leather / Soft-Shell **"Breathable"** / Reflector / Soft-Shell & TPU Mould Protection
- **Liner**
Water-Proof Membrane / Air-Mesh with Foam "soft touch"
- **Ventilation**
Air-vent with TPU Tip
- **Protection**
Soft-Shell & TPU with Foam Knuckle & Fingers Mould Protector
- **High Visibility**
Reflector Piping
- **Other Features**
Double Layer Anti-Slip Palm Reinforcement / Velcro Straps / Reflective Heat Transfer Brands



Sizes Men : XS to 4XL
 Women: XS to XL

Measurement Fit: Page 195

Color options : Page 193

Weather : 4 Seasons



White Neon-Green Grey

NF-4002



Grey Red Neon-Green

NF-4003

- **Out Shell**
Cow-Hide "Aniline" Leather / Soft-Shell **"Breathable"** / Reflector / Soft-Shell & TPU Mould Protection
- **Liner**
Water-Proof Membrane / Air-Mesh with Foam "soft touch"
- **Ventilation**
Air-vent with TPU Tip
- **Protection**
Soft-Shell & TPU with Foam Knuckle & Fingers Mould Protector
- **High Visibility**
Reflector Piping
- **Other Features**
Double Layer Anti-Slip Palm Reinforcement / Velcro Straps / Reflective Heat Transfer Brands



Sizes Men : XS to 4XL
Women: XS to XL

Measurement Fit: Page 195

Color options : Page 193

Weather : 4 Seasons



NF-4004



Black Neon-Green Grey



Red Neon-Green Black



NF-4005



NF-4006



White Red Grey

- Out Shell
Cow-Hide "Aniline" Leather / Soft-Shell "Breathable" / Sublimation / Reflector / Soft-Shell, Leather & TPR Mould Protection
- Liner
Water-Proof Membrane / Air-Mesh with Foam "soft touch"
- Ventilation
Air-vent with TPU Tip
- Protection
Soft-Shell, Leather & Kevlar with Foam Knuckle & Fingers Mould Protector
- High Visibility
Reflector Piping
- Other Features
Double Layer Anti-Slip Palm Reinforcement / Velcro Straps / Reflective Heat Transfer Brands



Sizes Men : XS to 4XL
Women: XS to XL

Measurement Fit: Page 195

Color options : Page 193

Weather : 4 Seasons



NF-4007



White Neon-Green Red



Grey Red Black



NF-4008



NF-4009



White Neon-Green Grey

- **Out Shell**
Cow-Hide "Aniline" Leather / Soft-Shell **"Breathable"** / Sublimation / Reflector / TPU & Leather Mould Protection
- **Liner**
Water-Proof Membrane / Air-Mesh with Foam "soft touch"
- **Ventilation**
Air-vent with TPU Tip
- **Protection**
Soft-Shell, TPU & Leather with Foam Knuckle & Fingers Mould Protector
- **High Visibility**
Reflector Piping
- **Other Features**
Double Layer Anti-Slip Palm Reinforcement / Velcro Straps / Reflective Heat Transfer Brands



Sizes Men : XS to 4XL
Women: XS to XL

Measurement Fit: Page 195

Color options : Page 193

Weather : 4 Seasons



NF-4010



Red Neon-Green Grey



Neon-Green Grey Red



NF-4011



NF-4012



Black Neon-Green Grey

- Out Shell

Cow-Hide "Aniline" Leather / Soft-Shell "Breathable" / Reflector / Kevlar / Soft-Shell Mould Protection
- Liner

Water-Proof Membrane / Air-Mesh with Foam "soft touch"
- Ventilation

Air-vent with TPU Tip
- Protection

Kevlar & Soft-Shell with Foam Knuckle & Fingers Mould Protector
- High Visibility

Reflector Piping
- Other Features

Double Layer Anti-Slip Palm Reinforcement / Velcro Straps / Reflective Heat Transfer Brands



Sizes Men : XS to 4XL
Women: XS to XL

Measurement Fit: Page 195

Color options : Page 193

Weather : 4 Seasons



NF-4013



Black

Neon-Green

Red



Grey

Red

Black



NF-4014



NF-4015



Grey

Neon-Green

Red

■ **Out Shell**
Cow-Hide "Aniline" Leather / Soft-Shell "Breathable" / Reflector / EVO Rubber Protection

■ **Liner**
Water-Proof Membrane / Air-Mesh with Foam "soft touch"

■ **Ventilation**
Air-vent with TPU Tip

■ **Protection**
EVO & Leather with Foam Knuckle & Fingers

■ **High Visibility**
Reflector Piping

■ **Other Features**
Double Layer Anti-Slip Palm Reinforcement / Velcro Straps / Reflective Heat Transfer Brands



Sizes Men : XS to 4XL
Women: XS to XL

Measurement Fit: Page 195

Color options : Page 193

Weather : 4 Seasons

Winter Leather & Textile Short Gloves



NF-4070



White Neon-Green Grey



Red Neon-Green Black



NF-4071



NF-4072



Red Neon-Green Grey

- **Out Shell**
Cow-Hide "Aniline" Leather / Soft-Shell "Breathable" / Reflector / Leather / TPU Mould Protection
- **Liner**
Water-Proof Membrane / Air-Mesh with Foam "soft touch"
- **Ventilation**
Air-Vent with TPU Tip
- **Protection**
TPU & Leather with Foam Knuckle & Fingers Mould Protector
- **High Visibility**
Reflector Piping
- **Other Features**
Double Layer Anti-Slip Palm Reinforcement / Velcro Straps / Reflective Heat Transfer Brands



Sizes Men : XS to 4XL
 Women: XS to XL

Measurement Fit: Page 195

Color options : Page 193

Weather : 4 Seasons



NF-4073



Black Neon-Green Red



Red Neon-Green Black



NF-4074



NF-4075



Grey Red Neon-Green

- **Out Shell**
Cow-Hide "Aniline" Leather / Soft-Shell "Breathable" / Reflector / Leather Mould Protection
- **Liner**
Water-Proof Membrane / Air-Mesh with Foam "soft touch"

- **Ventilation**
Air-Vent with TPU Tip
- **Protection**
Soft-Shell & Leather with Foam Knuckle & Fingers Mould Protector
- **High Visibility**
Reflector Piping
- **Other Features**
Double Layer Anti-Slip Palm Reinforcement / Velcro Straps / Reflective Heat Transfer Brands



Sizes Men : XS to 4XL
Women: XS to XL

Measurement Fit: Page 195

Color options : Page 193

Weather : 3 Seasons

Leather & Textile Gloves



NF-4100



White Red Grey



NF-4101



Grey Neon-Green Black

- **Out Shell**
Cow-Hide "Aniline" Leather / Reflector / Kevlar / Printed Leather & TPU Mould Protection
- **Liner**
Poly-Mide "soft touch"
- **Ventilation**
Air-Vent with TPU Tip
- **Protection**
Kevlar & TPU with Foam Knuckle & Fingers Mould Protector
- **High Visibility**
Reflector Piping
- **Other Features**
Double Layer Anti-Slip Palm Reinforcement / Velcro Straps / TPR & Printed Brands



Sizes Men : XS to 4XL
 Women: XS to XL

Measurement Fit: Page 195

Color options : Page 193

Weather : All Seasons



NF-4102



White

Red

Grey



NF-4103



Grey

Red

Neon-Green

- **Out Shell**
Cow-Hide "Aniline" Leather / Reflector / TPU Mould Protection
- **Liner**
Poly-Mide "soft touch"
- **Ventilation**
Air-Vent with TPU Tip
- **Protection**
Steel, Kevlar & TPU with Foam Knuckle & Fingers Mould Protector
- **High Visibility**
Reflector Piping
- **Other Features**
Double Layer Anti-Slip Palm Reinforcement / Velcro Straps / TPR & Printed Brands



Sizes Men : XS to 4XL
Women: XS to XL

Measurement Fit: Page 195

Color options : Page 193

Weather : All Seasons

Leather & Textile Gloves



NF-4104



Black Neon-Green Grey



Red Neon-Green Black



NF-4105



NF-4106



Black Neon-Green Grey

- Out Shell

Cow-Hide "Aniline" Leather / Printed Leather / Reflector / TPR, Soft-Shell & TPU Mould Protection
- Liner

Poly-Mide "soft touch"
- Ventilation

Air-Vent with TPU Tip
- Protection

Steel, Kevlar & TPU with Foam Knuckle & Fingers Mould Protector
- High Visibility

Reflector Piping
- Other Features

Double Layer Anti-Slip Palm Reinforcement / Velcro Straps / TPR & Printed Brands



Sizes Men : XS to 4XL
Women: XS to XL

Measurement Fit: Page 195

Color options : Page 193

Weather : All Seasons

Leather & Textile Gloves



NF-4107



Black

Red

Grey



Blue

Red

Neon-Green



NF-4108



NF-4109



Black

Neon-Green

Blue

- **Out Shell**
Cow-Hide "Aniline" Leather / Printed Leather / Air-Mesh / Reflector / Steel, Kevlar & TPU Mould Protection
- **Liner**
Poly-Mide "soft touch"
- **Ventilation**
Air-Vent with TPU Tip
- **Protection**
Steel, Kevlar & TPU with Foam Knuckle & Fingers Mould Protector
- **High Visibility**
Reflector Piping
- **Other Features**
Double Layer Anti-Slip Palm Reinforcement / Velcro Straps / TPR & Printed Brands



Sizes Men : XS to 4XL
Women: XS to XL

Measurement Fit: Page 195

Color options : Page 193

Weather : All Seasons

Leather & Textile Gloves



NF-4110



White Neon-Green Grey



Grey Red Black



NF-4111



NF-4112



White Neon-Green Grey

- Out Shell
Cow-Hide "Aniline" Leather / Reflector / Steel & TPU Mould Protection
- Liner
Poly-Mide "soft touch"
- Ventilation
Air-Vent with TPU Tip
- Protection
Steel & TPU with Foam Knuckle & Fingers Mould Protector
- High Visibility
Reflector Piping
- Other Features
Double Layer Anti-Slip Palm Reinforcement / Velcro Straps / TPR & Printed Brands



Sizes Men : XS to 4XL
Women: XS to XL

Measurement Fit: Page 195

Color options : Page 193

Weather : All Seasons

Leather & Mesh Gloves



NF-4113



Neon-Green Red Grey



Grey Neon-Green Black



NF-4114



NF-4115



Grey Red Neon-Green

- Out Shell**
 Cow-Hide "Aniline" Leather / Reflector / Air Mesh
 Kevlar & Leather Mould Protection
- Liner**
 Poly-Mide "soft touch"
- Ventilation**
 Air-Vent with TPU Tip
- Protection**
 Kevlar & Leather with Foam Knuckle & Fingers
 Mould Protector
- High Visibility**
 Reflector Piping
- Other Features**
 Double Layer Anti-Slip Palm Reinforcement /
 Velcro Straps / TPR & Printed Brands



Sizes Men : XS to 4XL
 Women: XS to XL

Measurement Fit: Page 195

Color options : Page 193

Weather : All Seasons



NF-4130



White Red Grey



Grey White Neon-Green



NF-4131



NF-4132



White Neon-Green Grey

- **Out Shell**
Cow-Hide "Aniline" Leather / Amara Fabric / MaxDura Sublimated / Reflector / Kevlar & TPU Mould Protection
- **Liner**
Poly-Mide "soft touch"
- **Ventilation**
Air-Vent with TPU Tip
- **Protection**
Kevlar & TPU with Foam Knuckle & Fingers Mould Protector
- **High Visibility**
Reflector Piping
- **Other Features**
Double Layer Anti-Slip Palm Reinforcement / Velcro Straps / TPR & Printed Brands



Sizes Men : XS to 4XL
 Women: XS to XL

Measurement Fit: Page 195

Color options : Page 193

Weather : All Seasons



NF-4133



Black

Neon-Green

Grey



Grey

Red

White



NF-4134



NF-4135



Neon-Green

Red

Grey

■ Out Shell

Cow-Hide "Aniline" Leather / Perforated Leather / Air-Mesh / Forway Rib / Reflector / Leather Mould Protection

■ Liner

Poly-Mide "soft touch"

■ Ventilation

Air-Mesh & TPU Tip

■ Protection

Leather with Foam Knuckle & Fingers Mould Protector

■ High Visibility

Reflector Piping

■ Other Features

Double Layer Anti-Slip Palm Reinforcement / Velcro Straps / TPR & Printed Brands



Sizes Men : XS to 4XL
Women: XS to XL

Measurement Fit: Page 195

Color options : Page 193

Weather : All Seasons

Leather & Textile Short Gloves



NF-4136



Black

Neon-Green

White



Grey

Red

Neon-Green



NF-4137



NF-4138



Red

Neon-Green

Grey

- Out Shell**
 Cow-Hide "Aniline" Leather / Perforated Leather / Air-Mesh / Forway Rib / Reflector / Kevlar & TPU Mould Protection
- Liner**
 Poly-Mide "soft touch"
- Ventilation**
 Air-Mesh & TPU Tip
- Protection**
 Kevlar & TPU with Foam Knuckle & Fingers Mould Protector
- High Visibility**
 Reflector Piping
- Other Features**
 Double Layer Anti-Slip Palm Reinforcement / Velcro Straps / TPR & Printed Brands



Sizes Men : XS to 4XL
 Women: XS to XL

Measurement Fit: Page 195

Color options : Page 193



NF-4139



Neon-Green

Red

Grey



Red

Neon-Green

White



NF-4140



NF-4141



White

Neon-Green

Red

- Out Shell**
 Goat "Aniline" Leather / Perforated Leather / Air-Mesh / Forway Rib / Reflector / Kevlar & TPU Mould Protection
- Liner**
 Poly-Mide "soft touch"
- Ventilation**
 Air-Mesh & TPU Tip
- Protection**
 Kevlar & TPU with Foam Knuckle & Fingers Mould Protector
- High Visibility**
 Reflector Piping
- Other Features**
 Double Layer Anti-Slip Palm Reinforcement / Velcro Straps / TPR & Printed Brands



Sizes Men : XS to 4XL
 Women: XS to XL

Measurement Fit: Page 195

Color options : Page 193

Leather & Textile Short Gloves



NF-4142



White Red Grey



Grey Red Neon-Green



NF-4143



NF-4144



Neon-Green Red Grey

- Out Shell

Cow-Hide "Aniline" Leather / Perforated Leather / Air-Mesh / Forway Rib / Reflector / Kevlar & TPU Mould Protection
- Liner

Poly-Mide "soft touch"
- Ventilation

Air-Mesh & TPU Tip
- Protection

Kevlar & TPU with Foam Knuckle & Fingers Mould Protector
- High Visibility

Reflector Piping
- Other Features

Double Layer Anti-Slip Palm Reinforcement / Velcro Straps / TPR & Printed Brands



Sizes Men : XS to 4XL
 Women: XS to XL

Measurement Fit: Page 195

Color options : Page 193

Leather & Textile Short Gloves



NF-4145



Black Neon-Green Red



Grey Neon-Green White



NF-4146



NF-4147



White Black

- Out Shell
Cow-Hide "Aniline" Leather / Perforated Leather / Air-Mesh / Forway Rib / Reflector / Kevlar & TPU Mould Protection
- Liner
Poly-Mide "soft touch"
- Ventilation
Air-Mesh & TPU Tip
- Protection
Kevlar & TPU with Foam Knuckle & Fingers Mould Protector
- High Visibility
Reflector Piping
- Other Features
Double Layer Anti-Slip Palm Reinforcement / Velcro Straps / TPR & Printed Brands



Sizes Men : XS to 4XL
Women: XS to XL

Measurement Fit: Page 195

Color options : Page 193

Leather & Textile Short Gloves



NF-4148



Neon-Green Red Grey



Grey Neon-Green Red



NF-4149



NF-4150



Grey Red Neon-Green

- **Out Shell**
Cow-Hide "Aniline" Leather / Soft-Shell Fabric / Reflector / Kevlar, Leather & Soft-Shell Mould Protection
- **Liner**
Poly-Mide "soft touch"
- **Ventilation**
Air-Vent with TPU Tip
- **Protection**
Kevlar, Leather & Soft-Shell with Foam Knuckle Mould Protector
- **High Visibility**
Reflector Piping
- **Other Features**
Double Layer Anti-Slip Palm Reinforcement / Velcro Straps / TPR & Printed Brands



Sizes Men : XS to 4XL
 Women: XS to XL

Measurement Fit: Page 195

Color options : Page 193

Weather : All Seasons

Leather Gloves



NF-4160



Brown



Brown



NF-4161



NF-4162



Brown

Black

■ Out Shell
Cow "Aniline" Leather

■ Liner
Poly-Mide "soft touch"



Sizes Men : XS to 4XL
Women: XS to XL

Measurement Fit: Page 195

Leather & Textile Mesh Gloves



NF-4170



Grey Red Neon-Green



NF-4172



White Red Grey



NF-4171



White Neon-Green Grey

- Out Shell
Cow-Hide "Aniline" Leather / Air Mesh / Reflector / TPR & Soft-Shell Mould Protection
- Liner
Poly-Mide "soft touch"
- Ventilation
Air-Vent with TPU Tip
- Protection
TPR & Soft-Shell with Foam Knuckle & Fingers Mould Protector
- High Visibility
Reflector Piping
- Other Features
Double Layer Anti-Slip Palm Reinforcement / Velcro Straps / TPR & Printed Brands



Sizes Men : XS to 4XL
Women: XS to XL

Measurement Fit: Page 195

Color options : Page 193

Weather : All Seasons



NF-4173



Black

Red

Neon-Green



Red

Neon-Green

Grey



NF-4174



NF-4175



Grey

Neon-Green

Red

■ **Out Shell**
Cow-Hide "Aniline" Leather / Air Mesh /
Reflector / TPR & Soft-Shell Mould Protection

■ **Liner**
Poly-Mide "soft touch"

■ **Ventilation**
Air-Vent with TPU Tip

■ **Protection**
TPR & Soft-Shell with Foam Knuckle & Fingers
Mould Protector

■ **High Visibility**
Reflector Piping

■ **Other Features**
Double Layer Anti-Slip Palm Reinforcement /
Velcro Straps / TPR & Printed Brands



Sizes Men : XS to 4XL
Women: XS to XL

Measurement Fit: Page 195

Color options : Page 193

Weather : All Seasons

Half Finger Leather & Textile Gloves



NF-4190



Black

Red

Neon-Green



Neon-Green

Red



NF-4191



NF-4192



Red

Neon-Green

Grey

■ Out Shell
Cow-Hide "Aniline" Leather / Soft-Shell /
Reflector / Soft-Shell Mould Protection

■ Liner
Poly-Mide "soft touch"

■ Ventilation
Air-Vent with TPU Tip

■ Protection
Soft-Shell with Foam Knuckle & Fingers
Mould Protector

■ High Visibility
Reflector Piping

■ Other Features
Double Layer Anti-Slip Palm Reinforcement /
Velcro Straps / TPR & Printed Brands



Sizes Men : XS to 4XL
Women: XS to XL

Measurement Fit: Page 195

Color options : Page 193

Weather : All Seasons

Winter Leather & Textile Gloves | Women



NF-4200



Red Neon-Green Black



Black Neon-Green Red



NF-4201



NF-4202



Grey Red Neon-Green

- **Out Shell**
Cow-Hide "Aniline" Leather / Soft-Shell / Reflector / Soft-Shell Mould Protection
- **Liner**
Water-Proof Membrane / Poly-Mide "soft touch"

- **Ventilation**
Air-Vent with TPU Tip
- **Protection**
Soft-Shell with Foam Knuckle & Fingers Mould Protector
- **High Visibility**
Reflector Piping
- **Other Features**
Double Layer Anti-Slip Palm Reinforcement / Velcro Straps / TPR & Printed Brands



Sizes: XS to XL

Measurement Fit: Page 195

Color options : Page 193

Weather : All Seasons

Winter Leather & Textile Gloves | Women



NF-4203



White Pink Sky-Blue



White Neon-Green Red



NF-4204



NF-4205



Grey Brown

■ **Out Shell**
Cow-Hide "Aniline" Leather / Soft-Shell /
Fur / Reflector / Soft-Shell Mould Protection

■ **Liner**
Water-Proof Membrane / Poly-Mide "soft touch"

■ **Ventilation**
Air-Vent with TPU Tip

■ **Protection**
Soft-Shell with Foam Knuckle & Fingers
Mould Protector

■ **High Visibility**
Reflector Piping

■ **Other Features**
Double Layer Anti-Slip Palm Reinforcement /
Velcro Straps / TPR & Printed Brands



Sizes: XS to XL

Measurement Fit: Page 195

Color options : Page 193

Weather : All Seasons



NF-4220



Neon-Green

Red

Grey



Red

Neon-Green

Pink



NF-4221



NF-4222



Grey

Neon-Green

Red

■ **Out Shell**
Cow-Hide "Aniline" Leather / Soft-Shell / Reflector / Soft-Shell Mould Protection

■ **Liner**
Poly-Mide "soft touch"

■ **Ventilation**
Air-Vent with TPU Tip

■ **Protection**
Soft-Shell with Foam Knuckle & Fingers Mould Protector

■ **High Visibility**
Reflector Piping

■ **Other Features**
Double Layer Anti-Slip Palm Reinforcement / Velcro Straps / TPR & Printed Brands



Sizes: XS to XL

Measurement Fit: Page 195

Color options : Page 193

Weather : All Seasons

Leather & Textile Gloves | Women



NF-4223



White Neon-Green Red



Red Pink White



NF-4224



NF-4225



White Neon-Green Red

■ Out Shell
Cow-Hide "Aniline" Leather / Soft-Shell /
Reflector / Soft-Shell Mould Protection

■ Liner
Poly-Mide "soft touch"

■ Ventilation
Air-Vent with TPU Tip

■ Protection
Soft-Shell with Foam Knuckle & Fingers
Mould Protector

■ High Visibility
Reflector Piping

■ Other Features
Double Layer Anti-Slip Palm Reinforcement /
Velcro Straps / TPR & Printed Brands



Sizes: XS to XL

Measurement Fit: Page 195

Color options : Page 193

Weather : All Seasons



NF-4226



Neon-Green

Red

Grey



Pink

Sky-Blue

Red



NF-4227



NF-4228



Sky-Blue

Neon-Green

Black

- **Out Shell**
Cow-Hide "Aniline" Leather / Soft-Shell / Reflector / Soft-Shell Mould Protection Printed Leather
- **Liner**
Poly-Mide "soft touch"

- **Ventilation**
Air-Vent with TPU Tip
- **Protection**
Soft-Shell with Foam Knuckle & Fingers Mould Protector
- **High Visibility**
Reflector Piping
- **Other Features**
Double Layer Anti-Slip Palm Reinforcement / Velcro Straps / TPR & Printed Brands



Sizes: XS to XL

Measurement Fit: Page 195

Color options : Page 193

Weather : All Seasons

Leather & Air-Mesh Gloves | Women



NF-4250



White Neon-Green Red



Neon-Green Pink White



NF-4251



NF-4252

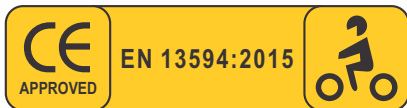


Pink Neon-Green Red

- Out Shell
Cow-Hide "Aniline" Leather / Air-Mesh / Reflector / Soft-Shell Mould Protection
- Liner
Poly-Mide "soft touch"
- Ventilation
Air-Vent with TPU Tip
- Protection
Soft-Shell with Foam Knuckle & Fingers Mould Protector
- High Visibility
Reflector Piping
- Other Features
Double Layer Anti-Slip Palm Reinforcement / Velcro Straps / TPR & Printed Brands



Sizes: XS to XL
Measurement Fit: Page 195
Color options : Page 193
Weather : All Seasons



CE Approved Gloves



Black

Neon-Green

Grey

NF-4111 CE

■ Out Shell
Cow-Hide "Aniline" Leather /
Reflector / TPR Mould Protection

■ Liner
Poly-Mide "soft touch"

■ CE Approved: **YES**
EN13594:2015

■ Ventilation
Air-Vent with TPU Tip

■ Protection
TPR with Foam Knuckle & Fingers
Mould Protector

■ High Visibility
Reflector Piping

■ Other Features
Double Layer Anti-Slip Palm Reinforcement /
Velcro Straps / TPR & Printed Brands



Sizes Men : XS to 4XL
Women: XS to XL

Measurement Fit: Page 195

Color options : Page 193

Weather : All Seasons

CE Approved Gloves



NF-4010 CE



Neon-Green

Red

Grey



Red

Neon-Green

White



NF-4133 CE



NF-4160 CE



Neon-Green

Red

Grey

■ Out Shell
Cow-Hide "Aniline" Leather / Cordura /
Reflector / Kevlar Protection

■ Liner
Poly-Mide "soft touch"

■ CE Approved: **YES**
EN13594:2015

■ Ventilation
Air-Vent with TPU Tip

■ Protection
Kevlar with Foam Knuckle & Fingers
Mould Protector

■ High Visibility
Reflector Piping

■ Other Features
Double Layer Anti-Slip Palm Reinforcement /
Velcro Straps / TPR & Printed Brands



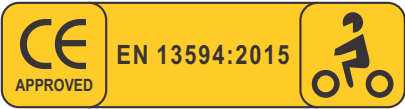
Sizes Men: XS to 4XL

Measurement Fit: Page 195

Color options : Page 193

Weather : All Seasons

CE Approved Gloves



NF-4010 CE L



White Neon-Green Red



Pink Neon-Green Black



NF-4033 CE L



NF-4060 CE L



Neon-Green Black Grey

- Out Shell
Cow-Hide "Aniline" Leather / Cordura / Reflector / Kevlar Protection
- Liner
Poly-Mide "soft touch"
- CE Approved: **YES**
EN13594:2015

- Ventilation
Air-Vent with TPU Tip
- Protection
Kevlar with Foam Knuckle & Fingers Mould Protector
- High Visibility
Reflector Piping
- Other Features
Double Layer Anti-Slip Palm Reinforcement / Velcro Straps / TPR & Printed Brands



Sizes Women: XS to XL

Measurement Fit: Page 195

Color options : Page 193

Weather : All Seasons



MOTOCROSS GEAR

Motorcycle Textile Trousers are light-weight & color-full protection gear for all kinds of riding. The trendiest safety garment. Shirts, jerseys, trousers, jackets and gloves are contemplated with specific fabric, printing patterns, attractive colors and safety measures. To enjoy and to be protective in motocross sports, gears enhance your sensational values and peace of mind.

Customizing Motocross Gear





NF-5000



Grey

Red

Sky-Blue



NF-5001



Grey

Neon-Green

Black

- Out Shell**
 Dobby 600-D / MaxDura 600-D & 1000-D /
 Dublin 2500-D Heavy Fabric / Reflector
- Liner**
 Air-Mesh "soft touch"
- Ventilation**
 Air-vent "Water-Proof" Auto Lock Zips Front & Back
- Protection**
 EVO Protectors "CE Level-1 & 2 Approved" on the
 Shoulder, Elbow & Back
- High Visibility**
 Reflector Heat Transfar Front & Back
- Other Features**
 Neoprene Collar & Cuff with Auto Lock Zip /
 Adjustable Sleeve & Waist / TPR & Reflector Brands



Sizes Men : XS to 4XL
 Kids : 6 to 16

Measurement Fit: Page 194

Color options : Page 193



Grey

Red

Neon-Green

NF-5002



Grey

Neon-Green

Black

NF-5003

- **Out Shell**
Dobby 600-D / MaxDura 600-D & 1000-D /
Dublan 2500-D Heavy Fabric / Reflector

- **Liner**
Air-Mesh "soft touch"

- **Ventilation**
Air-vent "Water-Proof" Auto Lock Zips Front & Back

- **Protection**
EVO Protectors "CE Level-1 & 2 Approved" on the
Shoulder, Elbow & Back

- **High Visibility**
Reflector Heat Transfar Front & Back

- **Other Features**
Neoprene Collar & Cuff with Auto Lock Zip /
Adjustable Sleeve & Waist / TPR & Reflector Brands



Sizes Men : XS to 4XL
Kids : 6 to 16

Measurement Fit: Page 194

Color options : Page 193



NF-5004



Neon-Orange

Grey

Sky-Blue



NF-5005



Black

Grey

Neon-Green

Out Shell

Dobby 600-D / MaxDura 600-D & 1000-D /
Sublimation / Dublan 2500-D Heavy Fabric /
Reflector

Liner

Air-Mesh "soft touch"

Ventilation

Air-vent "Water-Proof" Auto Lock Zips Front & Back

Protection

EVO Protectors "CE Level-1 & 2 Approved" on the
Shoulder, Elbow & Back

High Visibility

Reflector Heat Transfer Front & Back

Other Features

Neoprene Collar & Cuff with Auto Lock Zip /
Adjustable Sleeve & Waist / TPR & Reflector Brands



Sizes Men : XS to 4XL
Kids : 6 to 16

Measurement Fit: Page 194

Color options : Page 193

Endura Textile Trousers



NF-5050



Red

White

Grey



Grey

White

Neon-Green



NF-5051

- **Out Shell**
Dobby 600-D / MaxDura 600-D & 1000-D / Dublin 2500-D Heavy Fabric / Reflector
- **Liner**
Air-Mesh "soft touch"
- **Ventilation**
Air-vent "Water-Proof" Auto Lock Zips
- **Protection**
EVO Protectors "CE Level-1 & 2 Approved" on the Knee & Thigh
- **High Visibility**
Reflector Heat Transfer
- **Other Features**
Adjustable Waist / Stretchable Panels / TPR & Reflector Brands / Long & Short Connection Zipper for Jacket

Sizes Men : 28 to 40
Kids : 6 to 16

Measurement Fit: Page 195

Color options : Page 193

MX Jersey & Trouser



NF-5100



Black

Sky-Blue

Neon-Orange

Grey



NF-5200



Black

Sky-Blue

Neon-Orange

Grey

■ Out Shell (Jersey)
Micro-Mesh / Lycra (Sublimation Printed)

■ Out Shell (Trouser)
Dobby 600-D / MaxDura 600-D & 1000-D / Poly Mesh / Sublimation / Dublan 2500-D Heavy Fabric / Reflector / TPR Logos

■ Liner
Air-Mesh Sublimated "soft touch"

■ Ventilation
Air-Mesh

■ Protection
EVO Thigh

■ Other Features
Adjustable Waist / TPR & Printed Brands

Sizes Jerseys : XS to 4XL
Trousers: 28 to 40

Kids Jerseys : 6 to 16
Trousers: 6 to 16

Color options : Page 193

MX Jersey & Trouser



NF-5101



Black Red Sky-Blue Neon-Orange



NF-5201



Neon-Green Red Sky-Blue Neon-Orange

- Out Shell (Jersey)
Micro-Mesh / Lycra (Sublimation Printed)
- Out Shell (Trouser)
Dobby 600-D / MaxDura 600-D & 1000-D / Poly Mesh / Sublimation / Dublan 2500-D Heavy Fabric / Reflector / TPR Logos
- Liner
Air-Mesh Sublimated "soft touch"
- Ventilation
Air-Mesh
- Protection
EVO Thigh
- Other Features
Adjustable Waist / TPR & Printed Brands

Sizes Jerseys : XS to 4XL
 Trousers: 28 to 40

Kids Jerseys : 6 to 16
 Trousers: 6 to 16

Color options : Page 193

MX Jersey & Trouser



NF-5102



Red Sky-Blue Neon-Orange Grey



NF-5202



Red Sky-Blue Neon-Orange Grey

- Out Shell (Jersey)

Micro-Mesh / Lycra (Sublimation Printed)
- Out Shell (Trouser)

Dobby 600-D / MaxDura 600-D & 1000-D / Poly Mesh / Sublimation / Dublan 2500-D Heavy Fabric / Reflector / TPR Logos
- Liner

Air-Mesh Sublimated "soft touch"
- Ventilation

Air-Mesh
- Protection

EVO Thigh
- Other Features

Adjustable Waist / TPR & Printed Brands

Sizes Jerseys : XS to 4XL
 Trousers: 28 to 40

Kids Jerseys : 6 to 16
 Trousers: 6 to 16

Color options : Page 193

MX Jersey & Trouser



NF-5103



Neon-Green

Sky-Blue

Neon-Orange

Grey



NF-5203



Neon-Green

Sky-Blue

Neon-Orange

Grey

■ Out Shell (Jersey)
Micro-Mesh / Lycra (Sublimation Printed)

■ Out Shell (Trouser)
Dobby 600-D / MaxDura 600-D & 1000-D / Poly Mesh
/ Sublimation / Dublin 2500-D Heavy Fabric /
Embossed Leather / Reflector / TPR Logos

■ Liner
Air-Mesh Sublimated "soft touch"

■ Ventilation
Air-Mesh

■ Protection
EVO Thigh

■ Other Features
Adjustable Waist / TPR & Printed Brands

Sizes Jerseys : XS to 4XL
Trousers: 28 to 40

Kids Jerseys : 6 to 16
Trousers: 6 to 16

Color options : Page 193

MX Jersey & Trouser



NF-5104



Red Sky-Blue Neon-Orange Grey



NF-5204



Red Sky-Blue Neon-Orange Grey

- Out Shell (Jersey)
Micro-Mesh / Lycra (Sublimation Printed)
- Out Shell (Trouser)
Dobby 600-D / MaxDura 600-D & 1000-D / Poly Mesh / Sublimation / Dublin 2500-D Heavy Fabric / Embossed Leather / Reflector / TPR Logos
- Liner
Air-Mesh Sublimated "soft touch"
- Ventilation
Air-Mesh
- Protection
EVO Thigh
- Other Features
Adjustable Waist / TPR & Printed Brands

Sizes Jerseys : XS to 4XL
Trousers: 28 to 40

Kids Jerseys : 6 to 16
Trousers: 6 to 16

Color options : Page 193

MX Jersey & Trouser



NF-5105



Black Sky-Blue Neon-Orange Grey



NF-5205



Black Sky-Blue Neon-Orange Grey

- Out Shell (Jersey)
Micro-Mesh / Lycra (Sublimation Printed)
- Out Shell (Trouser)
Dobby 600-D / MaxDura 600-D & 1000-D / Poly Mesh / Sublimation / Dublan 2500-D Heavy Fabric / Reflector / TPR Logos
- Liner
Air-Mesh Sublimated "soft touch"
- Ventilation
Air-Mesh
- Protection
EVO Thigh
- Other Features
Adjustable Waist / TPR & Printed Brands

Sizes Jerseys : XS to 4XL
 Trousers: 28 to 40

Kids Jerseys : 6 to 16
 Trousers: 6 to 16

Color options : Page 193

MX Jersey & Trouser



NF-5106



Red Sky-Blue Neon-Orange Grey



NF-5206



Red Sky-Blue Neon-Orange Grey

- Out Shell (Jersey)
Micro-Mesh / Lycra (Sublimation Printed)
- Out Shell (Trouser)
Dobby 600-D / MaxDura 600-D & 1000-D / Poly Mesh / Sublimation / Dublan 2500-D Heavy Fabric / Reflector / TPR Logos
- Liner
Air-Mesh Sublimated "soft touch"
- Ventilation
Air-Mesh
- Protection
EVO Thigh
- Other Features
Adjustable Waist / TPR & Printed Brands

Sizes Jerseys : XS to 4XL
Trousers: 28 to 40

Kids Jerseys : 6 to 16
Trousers: 6 to 16

Color options : Page 193

MX Jersey & Trouser



NF-5107



Neon-Green

Sky-Blue

Neon-Orange

Grey



NF-5207



Neon-Green

Sky-Blue

Neon-Orange

Grey

- Out Shell (Jersey)
Micro-Mesh / Lycra (Sublimation Printed)
- Out Shell (Trouser)
Dobby 600-D / MaxDura 600-D & 1000-D / Poly Mesh / Sublimation / Dublan 2500-D Heavy Fabric / Reflector / TPR Logos
- Liner
Air-Mesh Sublimated "soft touch"
- Ventilation
Air-Mesh
- Protection
EVO Thigh
- Other Features
Adjustable Waist / TPR & Printed Brands

Sizes Jerseys : XS to 4XL
 Trousers: 28 to 40

Kids Jerseys : 6 to 16
 Trousers: 6 to 16

Color options : Page 193

MX Jersey & Trouser



NF-5108



Red Sky-Blue Neon-Orange Grey



NF-5208



Red Sky-Blue Neon-Orange Grey

- Out Shell (Jersey)
Micro-Mesh / Lycra (Sublimation Printed)
- Out Shell (Trouser)
Dobby 600-D / MaxDura 600-D & 1000-D / Poly Mesh / Sublimation / Dublin 2500-D Heavy Fabric / Reflector / TPR Logos
- Liner
Air-Mesh Sublimated "soft touch"
- Ventilation
Air-Mesh
- Protection
EVO Thigh
- Other Features
Adjustable Waist / TPR & Printed Brands

Sizes Jerseys : XS to 4XL
 Trousers: 28 to 40

Kids Jerseys : 6 to 16
 Trousers: 6 to 16

Color options : Page 193

TRIAL COLLECTION



NF-5150



NF-5250



Neon-Green

Red

Sky-Blue

Neon-Orange



NF-5350



Neon-Green

Red

Sky-Blue

Neon-Orange



Neon-Green

Red

Sky-Blue

Neon-Orange

■ Out Shell (Jersey)
Micro-Mesh / Lycra (Sublimation)

■ Out Shell (Trousers)
Micro-Lycra (Sublimation)
Keopratac Heavy Fabric Elastic Grip

■ Out Shell (Gloves)
Soft-Shell (Sublimated)
Velcro Straps

■ Other Features
Adjustable Waist / TPR & Printed Brands

Sizes Jerseys : XS to 4XL
Trousers: 28 to 40

Kids Jerseys : 6 to 16
Trousers: 6 to 16

Color options : Page 193



TRIAL COLLECTION



NF-5151



NF-5251



Red Sky-Blue Neon-Orange Grey



Red Sky-Blue Neon-Orange Grey

NF-5351



Red Sky-Blue Neon-Orange Grey

- Out Shell (Jersey)

Micro-Mesh / Lycra (Sublimation)
- Out Shell (Trouser)

Micro-Lycra (Sublimation)

Keopratac Heavy Fabric Elastic Grip
- Out Shell (Gloves)

Soft-Shell (Sublimated)

Velcro Straps
- Other Features

Adjustable Waist / TPR & Printed Brands

Sizes Jerseys : XS to 4XL
 Trousers: 28 to 40

Kids Jerseys : 6 to 16
 Trousers: 6 to 16

Color options : Page 193

MX Gloves



NF-5300



Red Neon-Green Neon-Orange



Grey Neon-Orange Neon-Green



NF-5301



NF-5302



Red Sky-Blue Grey

- Out Shell**
 Poly-Mesh / Forway Rib Sublimated / Embossed
 Neoprene / Amara / TPR Direct-Inject / Silicone
 Finger Tips
- Ventilation**
 Poly Air-Mesh
- Protection**
 TPR Direct-Inject Protector on Knuckle & Fingers
- High Visibility**
 Reflector Piping
- Other Features**
 Double Layer Amara Palm Reinforcement /
 Velcro Straps / TPR Direct-Inject Brands



Sizes: XS to 4XL
 Kids 6 to 16
 Measurement Fit: Page 195
 Color options : Page 193



MX Gloves



NF-5303



Neon-Green Sky-Blue Grey



Grey Red Neon-Green



NF-5304



NF-5305



Red Sky-Blue Grey

- **Out Shell**
Poly-Mesh / Forway Rib Sublimated / Embossed
Neoprene / Amara / TPR Direct-Inject / Silicone
Finger Tips
- **Ventilation**
Poly Air-Mesh
- **Protection**
TPR Direct-Inject Protector on Knuckle & Fingers
- **High Visibility**
Reflector Piping
- **Other Features**
Double Layer Amara Palm Reinforcement /
Velcro Straps / TPR Direct-Inject Brands



Sizes: XS to 4XL
Kids 6 to 16
Measurement Fit: Page 195
Color options : Page 193

MX Gloves



NF-5306



Black

Sky-Blue

Neon-Orange



Neon-Orange

Sky-Blue

Neon-Green



NF-5307



NF-5308



Red

Sky-Blue

Neon-Orange

■ **Out Shell**
Poly-Mesh / Forway Rib Sublimated / Embossed
Neoprene / Amara / TPR Direct-Inject / Silicone
Finger Tips

■ **Ventilation**
Poly Air-Mesh

■ **Protection**
TPR Direct-Inject Protector on Knuckle & Fingers

■ **High Visibility**
Reflector Piping

■ **Other Features**
Double Layer Amara Palm Reinforcement /
Velcro Straps / TPR Direct-Inject Brands



Sizes: XS to 4XL
Kids 6 to 16

Measurement Fit: Page 195

Color options : Page 193

MX Gloves



NF-5309



Black Sky-Blue Neon-Orange



Grey Neon-Orange Neon-Green



NF-5310



NF-5311



Red Sky-Blue Neon-Orange

- Out Shell**
 Poly-Mesh / Forway Rib Sublimated / Embossed
 Neoprene / Amara / TPR Direct-Inject / TPU &
 Kevlar Mould / Silicone Finger Tips
- Ventilation**
 Poly Air-Mesh
- Protection**
 TPR Direct-Inject Protector on Knuckle & Fingers
- High Visibility**
 Reflector Piping
- Other Features**
 Double Layer Amara Palm Reinforcement /
 Velcro Straps / TPR Direct-Inject Brands



Sizes: XS to 4XL
 Kids 6 to 16
 Measurement Fit: Page 195
 Color options : Page 193

MX Gloves



NF-5330



Neon-Green Sky-Blue Neon-Orange



Neon-Orange Sky-Blue Red



NF-5331



NF-5332



Sky-Blue Neon-Green Grey

- Out Shell**
 Poly-Mesh / Forway Rib Sublimated / Embossed
 Neoprene / Amara / TPR Direct-Inject / Silicone
 Finger Tips
- Ventilation**
 Poly Air-Mesh
- Protection**
 Kevlar, TPR Protector on Knuckle & Fingers
- High Visibility**
 Reflector Piping
- Other Features**
 Double Layer Amara Palm Reinforcement /
 Velcro Straps / TPR Direct-Inject Brands



Sizes: XS to 4XL
Kids: 6 to 16
Measurement Fit: Page 195
Color options : Page 193



Enjoy R

ATROX



FEET GUARD

Feet Anatomy states that toes and heel take decisions while biking, riding and motocross racing. Nerves in this part need protection, warmth, less friction and covering to protect injuries as Nerve shocks pass to muscles of tibia and fibula as well. Leather and textile boots are designed to protect these sensitive, micro and vital parts of feet. TPU shin protector, ankle metal protector,TPU heel protector and metal slider below toes are used in structure of boot.

Customizing Feet Guard



Feet Guards



NF-6000



White

Neon-Green

Grey



Neon-Green

Black

Grey



NF-6001

- **Out Shell**
Quality Leather / TPR Pad / TPU Mould Protection / Side Slider / Non-Slip Rubber Sole / Reflector

- **Liner**
Mesh with Foam Liner / Water-Proof Lining

- **High Visibility**
Reflector Material

- **Other Features**
Adjustable Velcro Strap / TPU Mould / TPR & Printed Brands



Sizes: 39 to 47

Color options : Page 193

Feet Guards



NF-6002



Red

Grey

Neon-Green



Grey

Neon-Green

White



NF-6003

- **Out Shell**
Quality Leather / TPR Pad / TPU Mould Protection / Side Slider / Non-Slip Rubber Sole / Reflector

- **Liner**
Mesh with Foam Liner / Water-Proof Lining

- **High Visibility**
Reflector Material

- **Other Features**
Adjustable Velcro Strap / TPU Mould / TPR & Printed Brands



Sizes: 39 to 47

Color options : Page 193

Feet Guards



NF-6004



Neon-Green

Red

Grey



Neon-Green

Red

Grey



NF-6005



NF-6030



Neon-Green

Red

Grey

- **Out Shell**
Quality Leather / TPR Pad / TPU Mould Protection / Side Slider / Non-Slip Rubber Sole / Reflector

- **Liner**
Mesh with Foam Liner / Water-Proof Lining

- **High Visibility**
Reflector Material

- **Other Features**
Adjustable Velcro Strap / TPU Mould / TPR & Printed Brands



Sizes: 39 to 47

Color options : Page 193

Feet Guards



NF-6031



Black



Neon-Green



Grey



NF-6032



NF-6033

- **Out Shell**
Quality Leather / TPR Pad / TPU Mould Protection / Side Slider / Non-Slip Rubber Sole / Reflector

- **Liner**
Mesh with Foam Liner / Water-Proof Lining

- **High Visibility**
Reflector Material

- **Other Features**
Adjustable Velcro Strap / TPU Mould / TPR & Printed Brands



Sizes: 39 to 47

Color options : Page 193

Feet Guards



NF-6050



NF-6051

■ Out Shell
Quality Leather / Non-Slip Rubber Sole / Reflector

■ Liner
Mesh with Foam Liner / Water-Proof Lining

■ High Visibility
Reflector Material

■ Other Features
Adjustable Velcro Strap / TPR & Printed Brands



Sizes: 39 to 47

Color options : Page 193



NF-6052



NF-6053

■ **Out Shell**
Quality Leather / Non-Slip Rubber Sole / Reflector

■ **Liner**
Mesh with Foam Liner / Water-Proof Lining

■ **High Visibility**
Reflector Material

■ **Other Features**
Adjustable Velcro Strap / TPR & Printed Brands



Sizes: 39 to 47

Color options : Page no. 193



NF-6054



NF-6055



NF-6056



Grey

Neon-Green

■ **Out Shell**
Quality Leather / Non-Slip Rubber Sole / Reflector

■ **Liner**
Mesh with Foam Liner / Water-Proof Lining

■ **High Visibility**
Reflector Material

■ **Other Features**
Adjustable Laces / TPR & Printed Brands



Sizes: 39 to 47

Color options : Page no. 193

Feet Guards



NF-6090



NF-6091



NF-6092

- Out Shell
Quality Leather / Non-Slip Rubber Sole / Reflector
- High Visibility
Reflector Material
- Liner
Mesh with Foam Liner / Water-Proof Lining
- Other Features
Adjustable Velcro Strap & Laces / TPR & Printed Brands



Sizes: 36 to 42

Color options : Page no. 193

Textile Tank Luggage



NF-7000



Built-in Back-Pack



Map Panel



Detachable Map Pocket



Map Panel



Built-in Back-Pack



NF-7001



NF-7002



Built-in Back-Pack



All-Round Zip for Volume Adjustment



Water-Proof Cover

■ Out Shell
Durable MaxDura 1000-D / Reflector

■ Liner
Water-Proof PVC Coated Rain Cover

■ High Visibility
Reflector Material

■ Other Features
Anti-Slip on Bottom of bag / Straps to Used Bottom
Back-Pack / Removable Base Plate with Map Holder



Sizes: Standard
Also as Per Required Measurement

Color options : Page no. 193

Textile Saddle Luggage



Packet for Drink Bottle



Helmet Safety Cover



NF-7030



Neon-Green

Red

Grey



NF-7031



Grey

Red

Blue

- Out Shell
Durable MaxDura 1000-D / Reflector / Sublimation MaxDura
- High Visibility
Reflector Material
- Liner
Water-Proof PVC Coated Rain Cover
- Other Features
Anti-Slip on Bottom of bag / Straps to Fix with Bike



Sizes: Standard
Also as Per Required Measurement

Color options : Page no. 193

Textile Back-Pack



NF-7050



Blue Red Neon-Green



Neon-Green Red Black



NF-7051



NF-7052



Grey Blue Neon-Green

- Out Shell
Durable MaxDura 1000-D / Air-Mesh / Reflector
- Liner
Water-Proof PVC Coated

- High Visibility
Reflector Material
- Other Features
Adjustable Straps



Textile Travel Luggage



■ Out Shell
Durable MaxDura 1000-D / Reflector

■ High Visibility
Reflector Material

■ Other Features
Wheels Stand for Easy Mover

Sizes: Standar
Also as Per Requird Measurement

Color options : Page no. 193

Leather Saddle Luggage



NF-7100



NF-7101



NF-7102



NF-7103

■ Out Shell
Quality Leather / PVC / Nickle Accessories

Measurement: 19 x 6 x 13 Inches
Also as Per Requird Measurement



NF-7140



NF-7170



NF-7180



NF-7181



NF-7182

■ Out Shell
Quality Leather / PVC / Nickle Accessories

Sizes: Standard
Also as Per Required Measurement



NF-7800



NF-7801



NF-7802



NF-7803



NF-7850



Grey

Sky-Blue

Neon-Green



Blue



NF-7830



NF-7851



NF-7852



NF-7853

■ Out Shell
Wind-Stopper / Cotton / Lycra / Neoprene /
Printed Designs

■ High Visibility
Reflector Material

■ Other Features
Adjustable Velcro Strap / Printed Brands

Sizes: S to 3XL

Color options : Page 193

Under Garments



Grey Red Neon-Green Sky-Blue



NF-7900

NF-7901

■ Out Shell
Wind-Stopper / Cotton / Lycra Strachable

■ High Visibility
Reflector Material

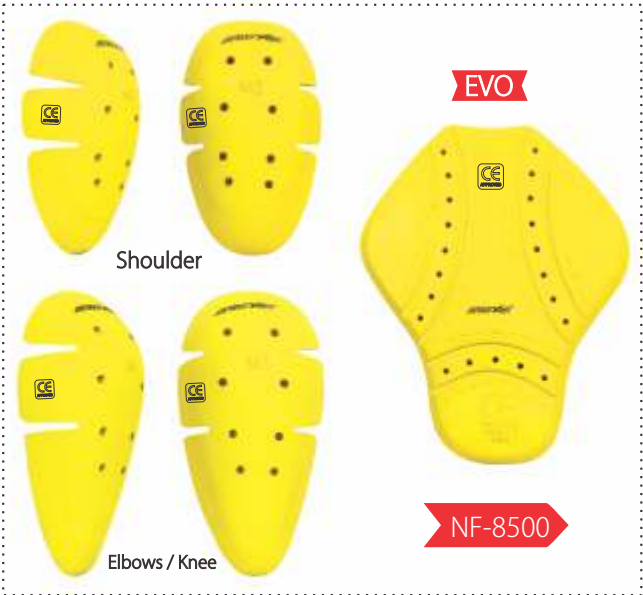
■ Other Features
Reflector Brands



Sizes Men : XS to 4XL
 Women: XS to XL

Color options : Page 193

Inner Protectors



■ Out Shell
EVO / EVA Rubber / PPE with EVA Rubber Protectors (CE Approved)

■ CE Approved: **YES**
EN 1621-1 : 2012
EN 1621-1 : 2014



Pantone Colors



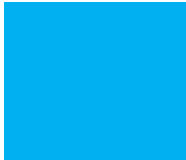
PANTONE
125 C



PANTONE
375 C



PANTONE
Blue 072 C



PANTONE
298 EC



PANTONE
7536 C



PANTONE
109 C



PANTONE
542 C



PANTONE
7507 C



PANTONE
225 C



PANTONE
Orange 021 C



PANTONE
236 C



PANTONE
368 C



PANTONE
199 C



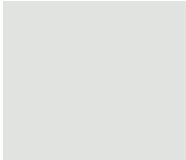
PANTONE
422 C



PANTONE
3405 C



PANTONE
165 C



PANTONE
Cool Grey 1 EC



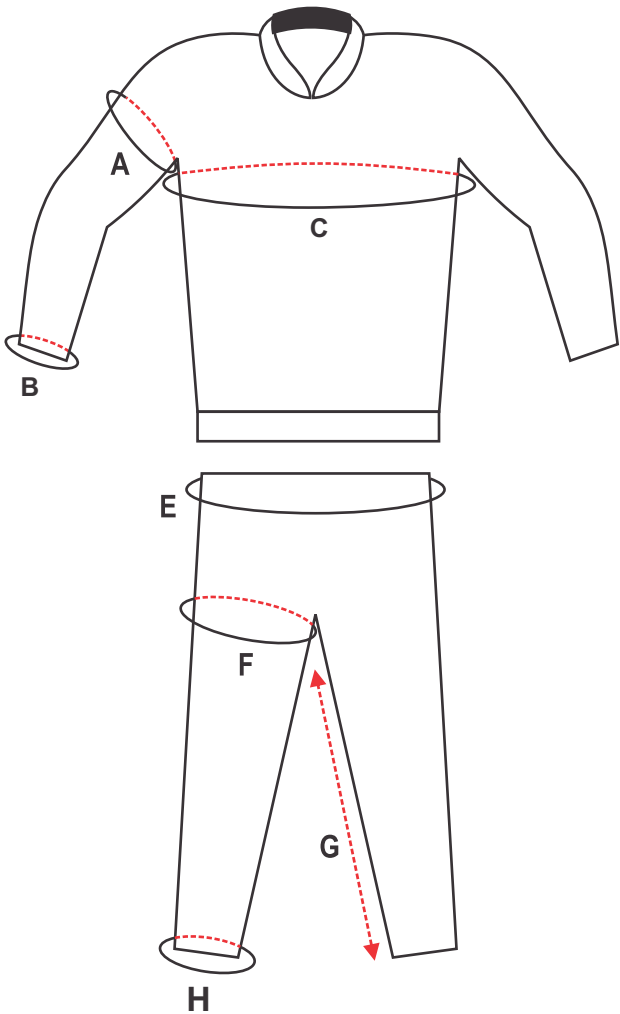
PANTONE
3945 C



PANTONE
2748 C



Size Chart



Men | Leather Suits

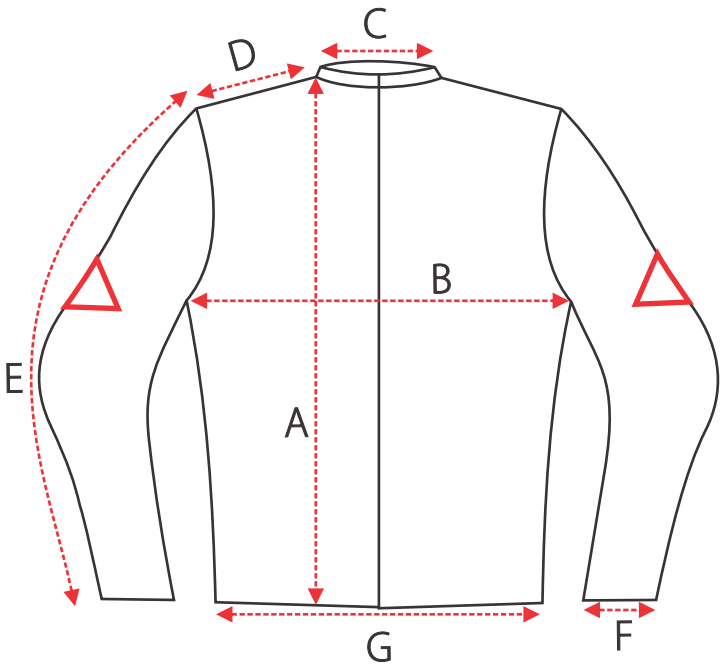
Measured outside of leather Suits | All details are in Centimeters!

	Size	46	48	50	52	54	56	58
A	Top Sleeve	37 cm	38 cm	39 cm	40 cm	40 cm	41 cm	42 cm
B	Cuff	22 cm	23 cm	23 cm	24 cm	25 cm	25 cm	26 cm
C	Chest	99 cm	104 cm	109 cm	113 cm	118 cm	123 cm	128 cm
E	Waist	84 cm	88 cm	92 cm	97 cm	101 cm	105 cm	110 cm
F	Thigh	58 cm	60 cm	62 cm	64 cm	66 cm	67 cm	68 cm
G	Inseam	71 cm	73 cm	75 cm	76 cm	78 cm	79 cm	80 cm
H	End Leg	29 cm	30 cm	30 cm	30 cm	31 cm	32 cm	33 cm

Women | Leather Suits

Measured outside of leather Suits | All details are in Centimeters!

	Size	33	36	38	40	42	44
A	Top Sleeve	33 cm	34 cm	35 cm	36 cm	37 cm	38 cm
B	Cuff	22 cm	22 cm	23 cm	23 cm	24 cm	24 cm
C	Chest	91 cm	96 cm	101 cm	107 cm	112 cm	117 cm
E	Waist	72 cm	76 cm	81 cm	86 cm	90 cm	95 cm
F	Thigh	53 cm	54 cm	55 cm	56 cm	57 cm	58 cm
G	Inseam	70 cm	72 cm	73 cm	74cm	75 cm	76 cm
H	End Leg	28 cm	28 cm	29 cm	29 cm	30 cm	30 cm



Men | Jackets Measurement

All measurements in Centimeters!

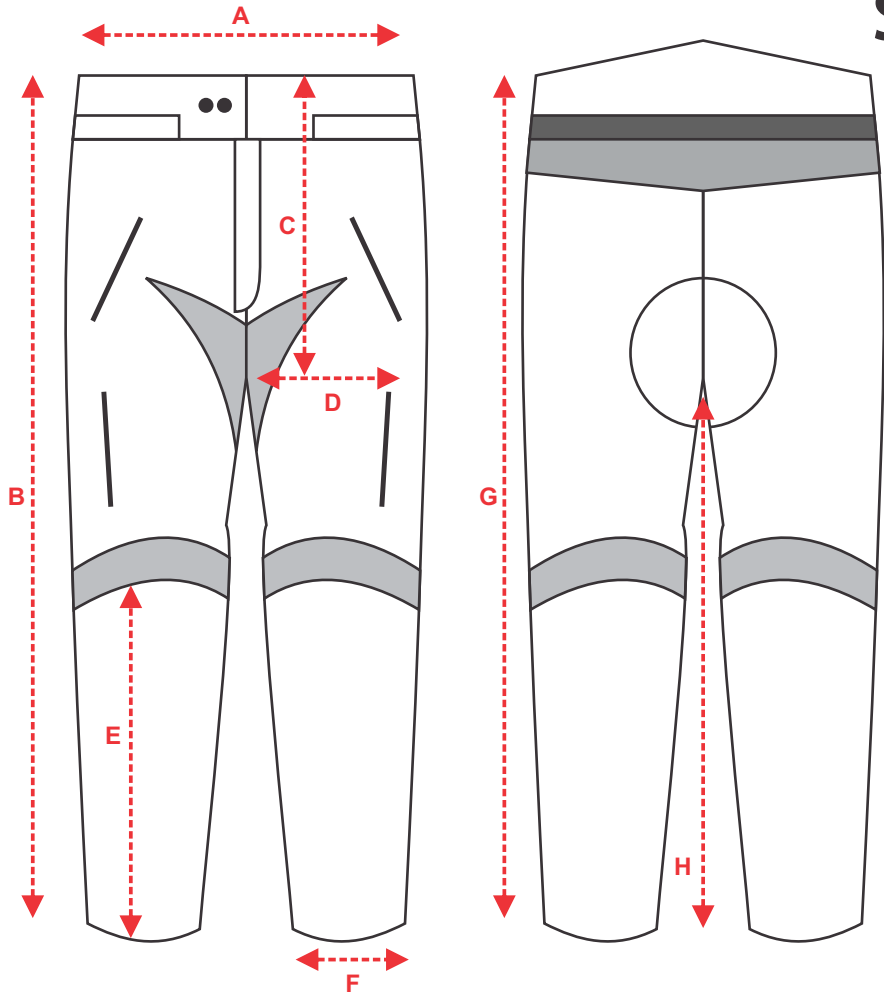
	Measurements	XS	S	M	L	XL	2XL	3XL	4XL
A	Front Length	63	64	65	66.5	68	69.5	71	72.5
B	Chest	56	58	60	62	64	66	68	70
C	Collar	17	17.5	18	18.5	19	19.5	20	20.5
D	Shoulder	17	17.5	18	18.5	19	19.5	20	20.5
E	Sleeve Length	62	63	64	65	66	67	68	69
F	Cuff	24.5	25	25.5	26	26	26.5	27	27
G	Bottom	50	52	54	56	58	60	62	64

Women | Jackets Measurement

All Measurements in Centimeters!

	Measurements	2XS	XS	S	M	L	XL	2XL
A	Front Length	59	60	61	62.5	64	65.5	67
B	Chest	46	48	50	52	54	56	58
C	Collar	16	16.5	17	17.5	18	18.5	19
D	Shoulder	14	14.5	15	15.5	16	16.5	17
E	Sleeve Length	60	61	62	63	64	65	66
F	Cuff	23	23.5	24	24.5	25	25.5	26
G	Bottom	44	46	48	50	52	54	56

Size Chart



Men | Trousers Measurement

All measurements in Centimeters!

	SIZE	XS	S	M	L	XL	2XL	3XL	4XL
A	Waist	41	43	45	47	49	51	53	55
B	Front Length	107	108.5	110	111.5	113	114.5	116	117.5
C	Top to inseam	29	29.5	30	30.5	31	31.5	32	32.5
D	Thai	66	68	70	72	73	75	77	79
E	Knee to bottom	57	58	59	60	61	62	63	64
F	Bottom	38	39	40	41	42	43	44	45
G	Back Length	107	108.5	110	111.5	113	114.5	116	117.5
H	Inseam	83	84	85	86	87	88	89	90

Women | Trousers Measurement

All measurements in Centimeters!

	SIZE	2XS	XS	S	M	L	XL	2XL	3XL	4XL
A	Waist	36	38	40	42	44	46	48	50	52
B	Front Length	94.5	96	97.5	99	100.5	102	103.5	105	106.5
C	Top to inseam	23.5	24	24.5	25	25.5	26	26.5	27	27.5
D	Thai	63	65	67	69	71	73	75	77	79
E	Knee to bottom	48	49	50	51	52	53	54	55	56
F	Bottom	35	37	38	39	40	41	42	43	44
G	Back Length	94.5	96	97.5	99	100.5	102	103.5	105	106.5
H	Inseam	71	72	73	74	75	76	77	78	79

Men's Glove Measurement

Measure around the hand at the fullest point excluding thumb.

Use chart to determine size:
SIZE HAND MEASUREMENTS

SM	6-1/2" - 7"
MD	7-1/2" - 8"
LG	8-1/2" - 9"
XL	9-1/2" - 10"
2XL	10-12"

Women's Glove Measurement

Measure around the hand at the fullest point excluding thumb.

Use chart to determine size:
SIZE HAND MEASUREMENTS

SM	6-1/2"
MD	7"
LG	7-1/2"
XL	8"
2XL	8-1/2"

Customers Note

A series of horizontal dashed lines for writing a note.



TO BE CONTINUED

We Exhibit at



www.intermot.de



www.aimexpousa.com



www.eicma.it



ATROX Co.,

P. O. Box-2671, 10-Km Sambrial Road,
Sialkot-51310,
Pakistan.



0092-52-6523488 / 6523499 / 6523377



0092-52-6523499



info@atrox.pk / sales@atrox.pk



www.atrox.pk



Atrox Nanf

